

MDS-E12/E12/1

SONY®

SERVICE MANUAL

J Model

MDS-E12

US Model

Canadian Model

AEP Model

E Model

Chinese Model

MDS-E12/E12/1

C

t C `h- ~ `E q t] ;Xi^M{

SUPPLEMENT-1

File this supplement with the Service Manual.

- 4R ~ 676
- » 55+667

6 6 7 +C.46 6*7 +

- **SCMS select jumper setting (GC, CN, UC)**
- **Note when replacing the motor driver IC (J, GC, UC, CN)**
- **Addition of repair parts for J, /1GC, /1CN, /1UC (J, /1GC, /1CN, /1UC)**

f] « S

5 Z T / 41Ur\$(^ 6 6. b{

6/\$w h6C +Zw

¢ ~p- ~ O ø

x 6w

wGL~ t« `|‡ /P< w"

6

t`hUlo

.g`oXi^M{

5Zw\$ \$(6 6~x|4\$.4 q »~ *\$w) UK

bwp|4&37*\$& /05&w c< `oT .gb AUK b{]}« Xi^M{

h|†ZT ...!,s loM UK bwp| †Zw ¢ ~.gwMt

x|4. ...fl X<T oT .g loXi^M{

[Notes]

- SCMS is removed from the destinations of MDS-E12/1 (GC), /1 (CN), /1 (UC).
When making service of the Main Mount of the MDS-E12 (GC), (CN), (UC) on top of the Main Mount for the destination of /1 destinations, pay attention on the description of the SERVICE NOTE item 1 and make the repair work in accordance with the SERVICE NOTE after checking the serial number.
- The Main Mount of the MDS-E12 for the destinations of (GC), (CN), (UC) is different in the SCMS setting and uses the different motor driver IC. Be sure to check the SERVICE NOTE item 2 before starting the repair work.
Some parts are changed in the MDS-E12 for the destination of /1. When repairing the mounted boards for former destinations, check the repair parts lists before starting the repair work.

SECTION 1 SERVICE NOTE

<G# yP. z~tx aw 4\$4 <R.
" U ^ oM bwp - ~ O txf
g ,Xw<R. " <Gwflw t.Y
' b{

p#
p \$

p \$

p \$

4\$.4<R+8 fl

8	¢	~`\'
3		Ω % z -
3	¢	~`\'

- The following two types of SCMS selector jumper are set in the equipment of the serial numbers shown below. When performing repair service, set the SCMS selector jumpers of the new board as shown in the table below.

Applicable serial numbers

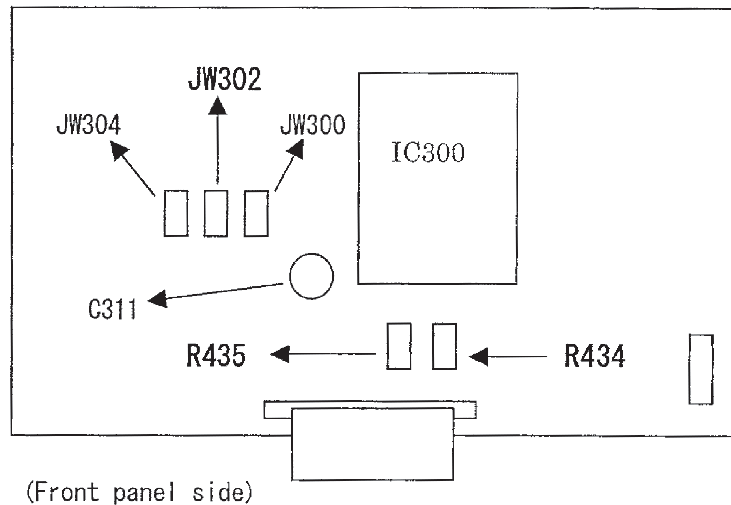
GC1 : No. 741401 to 741450

UC2 : No. 300001 to 301600

CN2 : No. 500001 to 500025

SCMS selector jumper setup table

	SCMS Free
JW302	Not mount
R434	0 ohm chip resistor
R435	Not mount



(Front panel side)

SECTION 2
DIAGRAMS

THIS NOTE IS COMMON FOR WIRING BOARDS
AND SCHEMATIC DIAGRAMS

- Abbreviation
CN : MDS-E12 : Chinese
GC : MDS-E12 : AEP, E
UC : MDS-E12 : US, Canadian
1CN : MDS-E12/1 : Chinese
1GC : MDS-E12/1 : AEP, E
1UC : MDS-E12/1 : US, Canadian
- A page display of a destination is the number of pages of MDS-E12 service manual.

For schematic diagrams

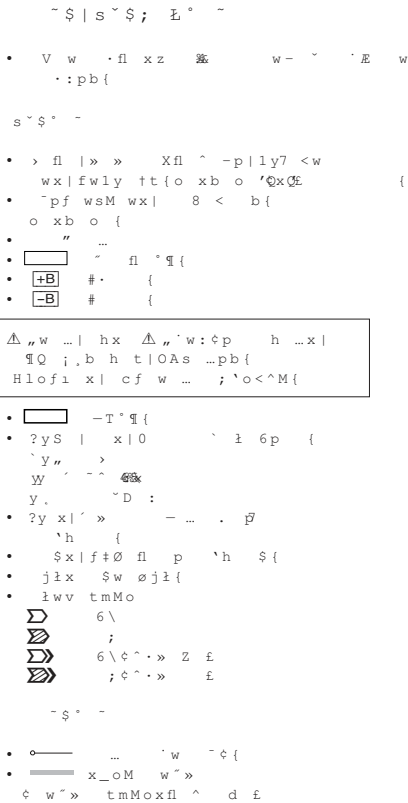
- All capacitors are in μF unless otherwise noted. pF : μF . 50V or less are not indicated except for electrolytics and tantalums.
- All resistors except chips are in Ω and $\frac{1}{4}\text{W}$ or less unless otherwise specified.
- Δ : internal component.
- \square : panel designation
- \square : B+ Line
- \square : B- Line

Note: The components identified by mark Δ or dotted line with mark Δ are critical for safety. Replace only with part number specified.	Note: Les composants identifiés par une marque Δ sont critiques pour la sécurité. Ne les remplacer que par une pièce portant le numéro spécifié.
--	---

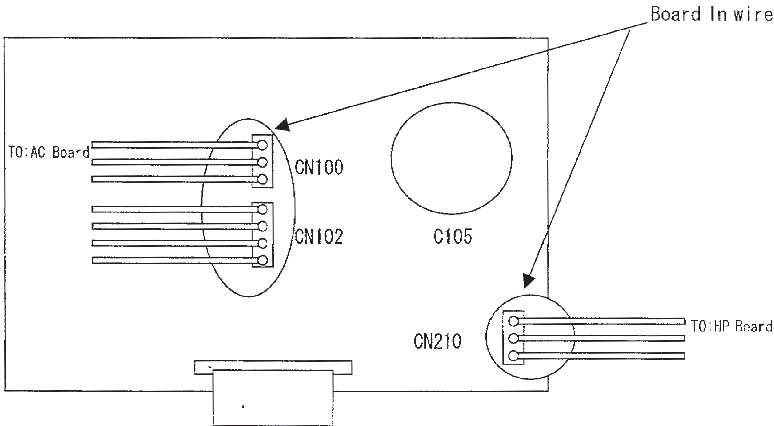
- \square : adjustment for repair.
- Voltage and waveforms are dc with respect to ground under no-signal (detuned) conditions.
- no mark : STOP
- () : Play the test disc (TDYS-1).
- * : can not be measured.
- Voltages are taken with a VOM (Input impedance 10 $\text{M}\Omega$). Voltage variations may be noted due to normal production tolerances.
- Waveforms are taken with a oscilloscope. Voltage variations may be noted due to normal production tolerances.
- Circled numbers refer to waveforms.
- Signal path.
 - \square : PB
 - \square : REC
 - \square : PB (Digital out)
 - \square : REC (Digital in)

For printed wiring boards

- \square : parts extracted from the component side.
- \square : Pattern on the side which is seen.
(Other patterns are not shown.)



2. When you are going to repair the former equipment using the new board that is supplied as repair part, the board-in-wires are already mounted to CN100, CN102 and CN210 of the service board. It means that the board-in-wires that have been used in the former board become unnecessary.
* The board-in-wires of the service board are compatible with the wires used in the former board.



*\$£f1tmMo{¢« £
,Xpx*£x~8a »- -# ¢
£J;^¢M£
\\ ¢ U , ¢h. f1^ ¢tx
,Xw ...j£ X« 'o¢ ' - ¢ ¢
~w ...flwf rO w ... ; 'o¢^M{

/	\$°	j	...j£
-	-	8a	#
-	0	a	#

3. When replacing IC104 (motor driver IC)
The motor driver LB164 (8-759-822-09) made by Sanyo was used in the former board.
If IC104 becomes defective and you are going to replace IC104 as a single part, watch the suffix number of the part code number of the MAIN board and select IC104 that is specified by the part list of Service Manual.

Suffix	Maker name	Model No.	Part No.
-11, -12	Made by Sanyo	(LB1641)	: 8-759-822-09
-13	Made by Rohm	(BA6209)	: 8-759-913-06

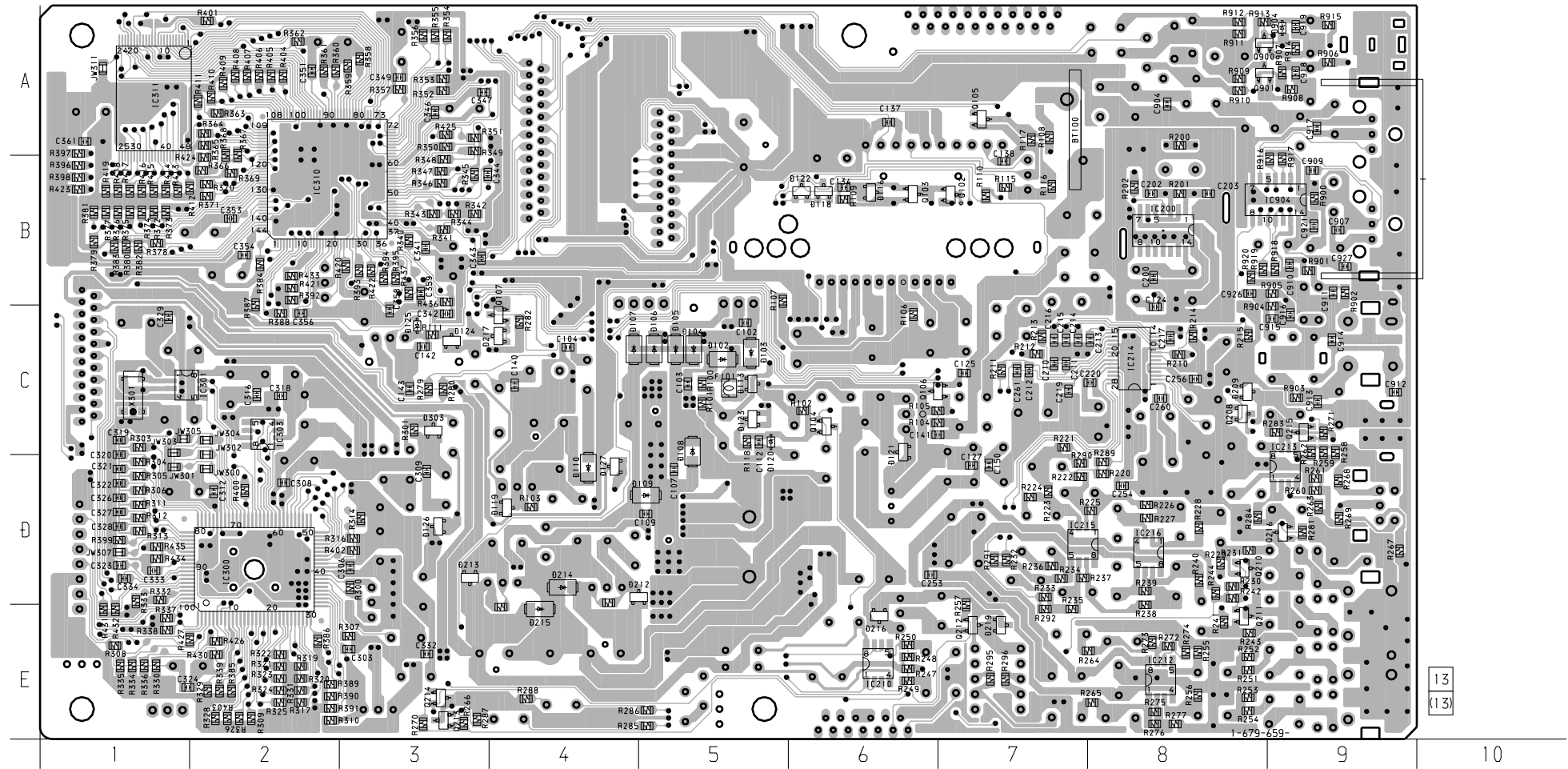
MDS-E12/E12/1

2-1. PRINTED WIRING BOARD – MAIN SECTION –

- Refer to page 4 for Note on Printed Wiring Boards on this manual.
- Refer to page 61 for Circuit Board Location.

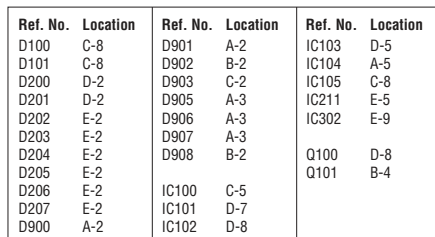
There are a few cases that the part printed on this diagram isn't mounted in this model.

【MAIN BOARD】(CONPONENT SIDE)

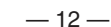


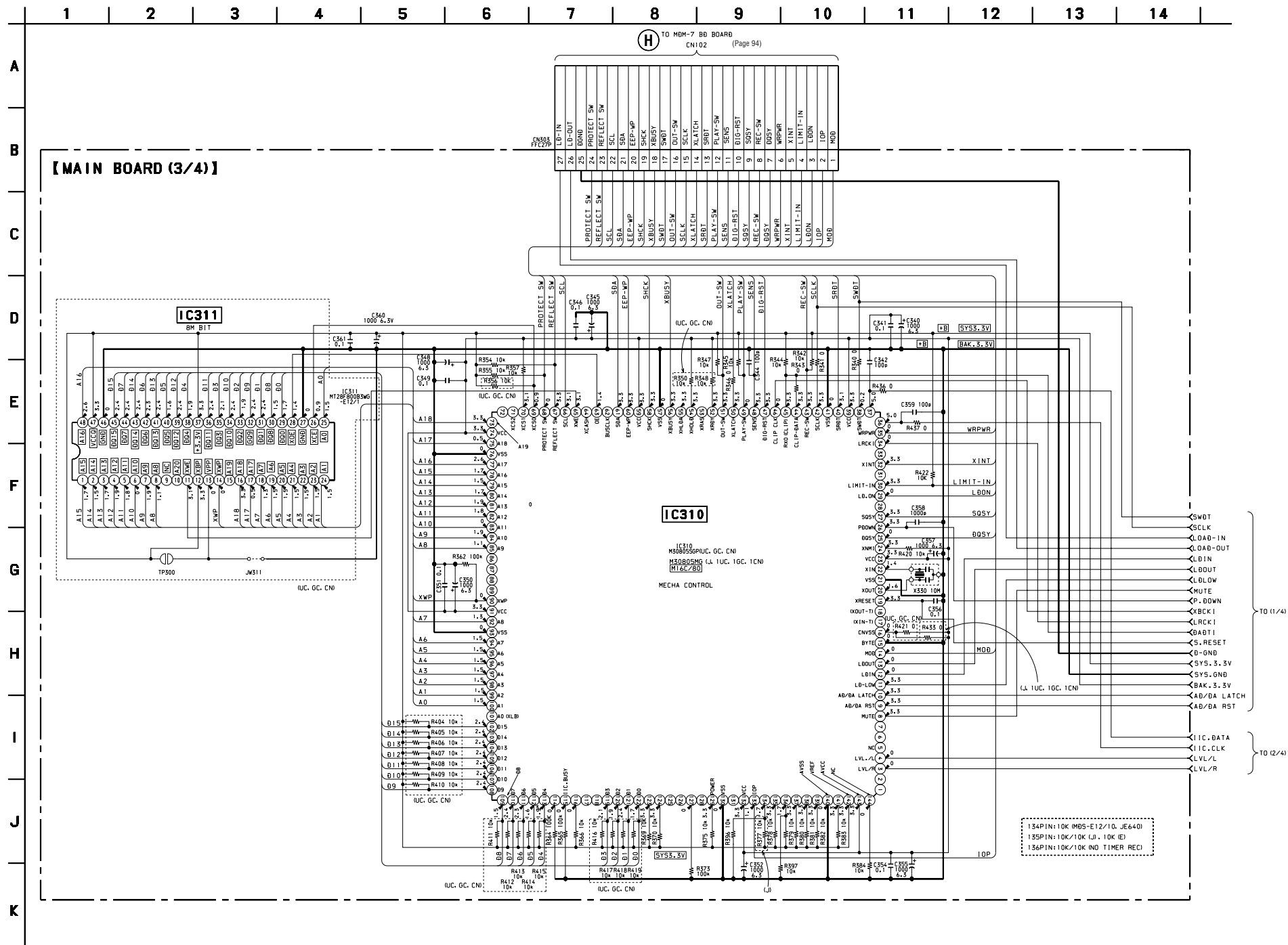
• Semiconductor Location

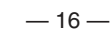
Ref. No.	Location	Ref. No.	Location	Ref. No.	Location	Ref. No.	Location	Ref. No.	Location
D102	C-5	D120	C-5	D215	E-4	IC216	D-8	Q210	D-8
D103	C-5	D121	D-6	D216	E-6	IC300	D-2	Q211	E-8
D104	C-5	D122	B-6	D217	C-4	IC301	C-1	Q212	E-7
D105	C-5	D123	C-5	D219	E-7	IC303	C-2	Q213	E-3
D106	C-5	D124	C-3	D303	C-3	IC310	B-2	D214	F-3
D107	C-4	D125	C-3	D904	A-9	IC311	A-1	Q215	C-9
D108	C-5	D126	D-3					Q216	D-9
D109	D-5	D127	D-4	IC200	B-8	Q102	B-7	Q900	A-9
D110	D-4	D208	C-8	IC210	E-6	Q103	B-6	Q901	A-9
D113	C-5	D209	C-8	IC212	F-8	Q104	C-6		
D116	B-6	D212	D-5	IC213	D-9	Q105	A-7		
D118	B-6	D213	D-3	IC214	C-8	Q106	C-7		
D119	D-4	D214	D-4	IC215	D-7	Q107	C-4		

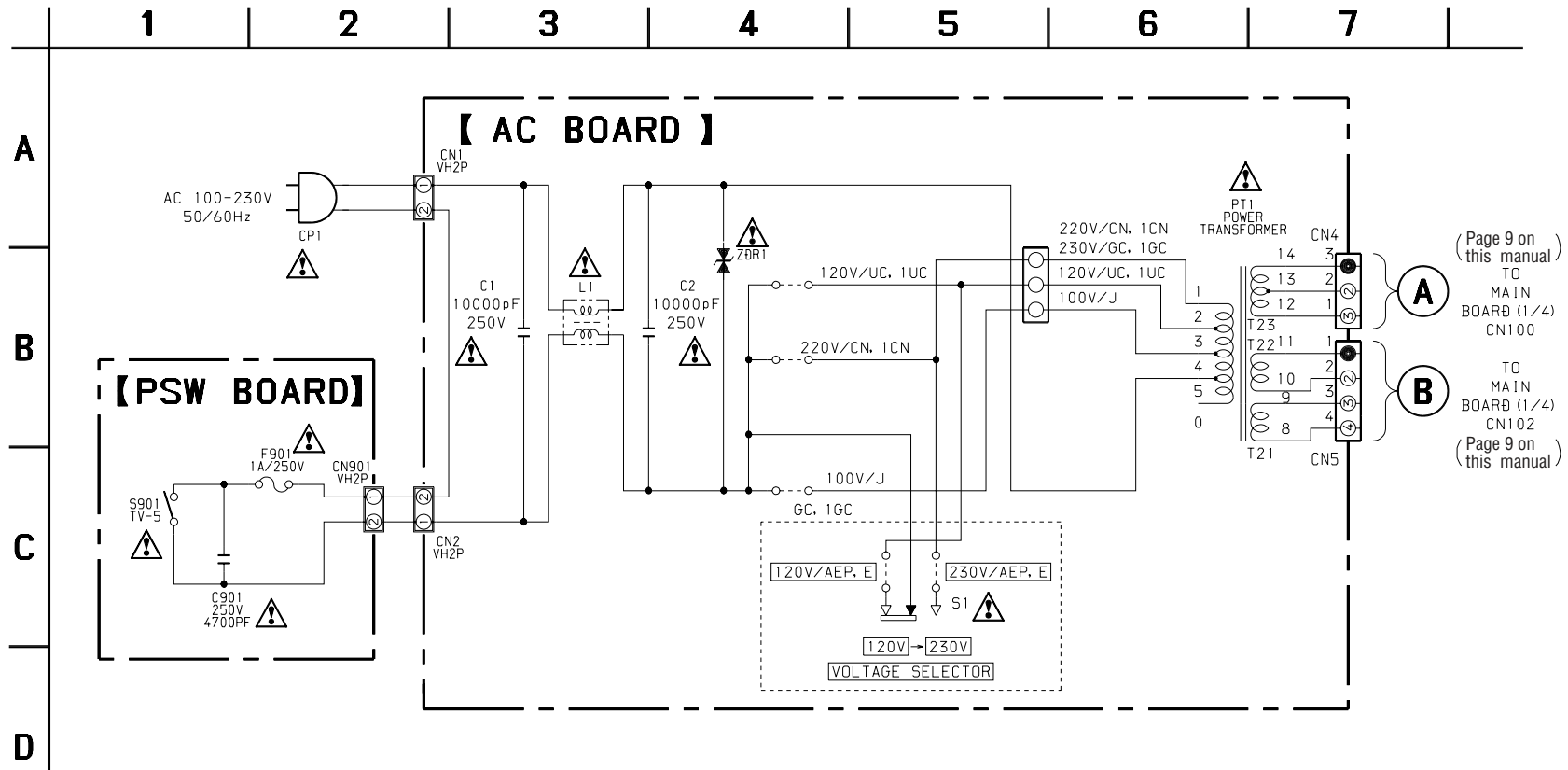












SECTION 3 EXPLODED VIEWS

† ; ~w« ‡
• x`j= ...wh | • z`tm
M o M ...q s øUK b{
• æ,,w ...x O `oS d {

• r\$ /w; ~ ...p l\$ j l w s M
...x ` d {
• v a a f l q ` A x | ...fl w 7
t K b {

△ „w ... | h x △ „`w:çp
h ...x | ¶Q ; ,b h
t | O A s ...p b {
H l o f i x | c f w ...
; `o < ^ M {

Note:

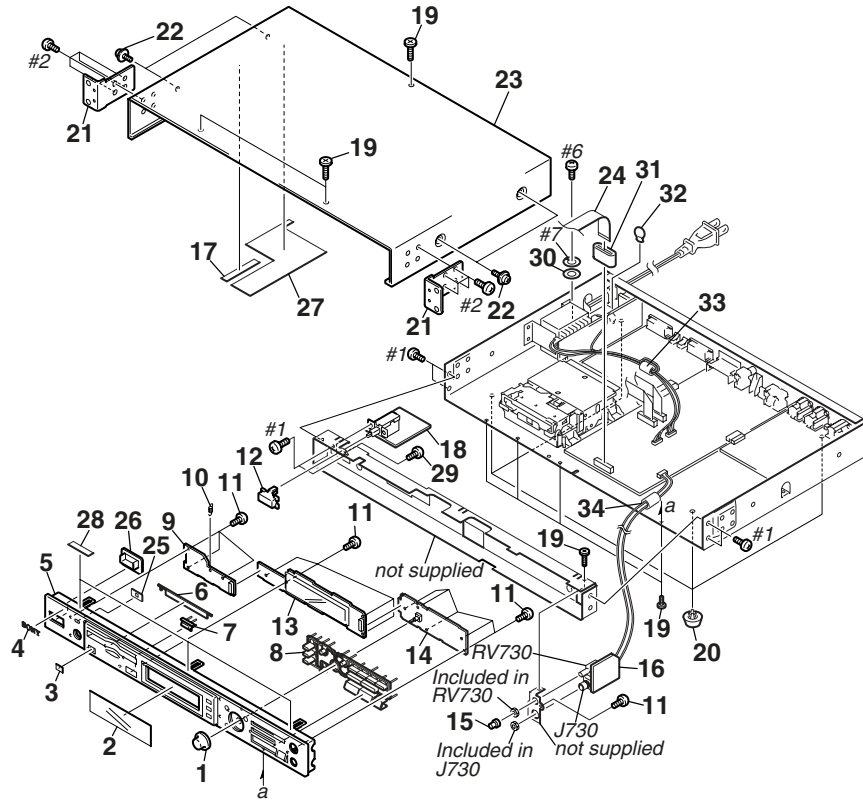
- -XX, -X mean standardized parts, so they may have some differences from the original one.
- Items marked “*” are not stocked since they are seldom required for routine service. Some delay should be anticipated when ordering these items.
- The mechanical parts with no reference number in the exploded views are not supplied.

- Hardware (# mark) list and accessories and packing materials are given in the last of this parts list.
- Abbreviation
CN : MDS-E12 : Chinese
GC : MDS-E12 : AEP, E
UC : MDS-E12 : US, Canadian
1CN : MDS-E12/1 : Chinese
1GC : MDS-E12/1 : AEP, E
1UC : MDS-E12/1 : US, Canadian

The components identified by mark △ or dotted line with mark △ are critical for safety. Replace only with part number specified.

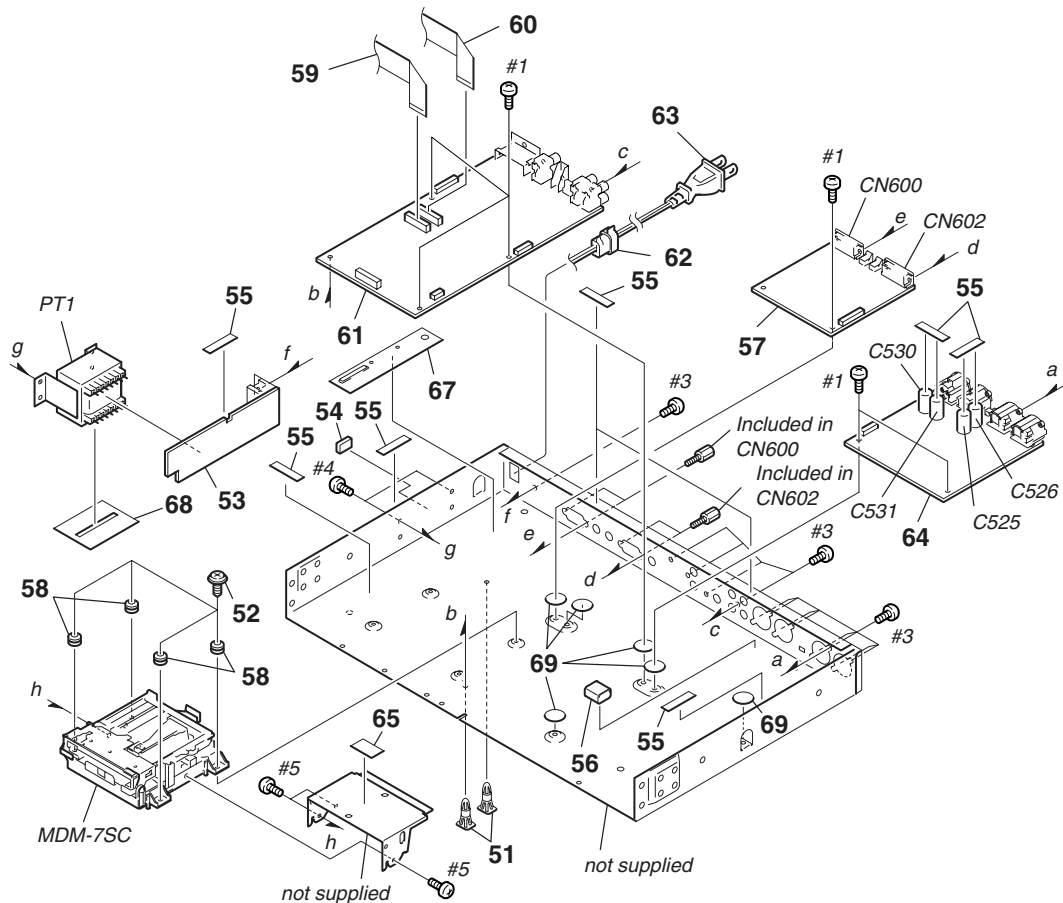
Les composants identifiés par une marque △ sont critiques pour la sécurité. Ne les remplacer que par une pièce portant le numéro spécifié.

3-1. FRONT SECTION



Ref. No.	Part No.	Description	Remarks	Ref. No.	Part No.	Description	Remarks
1	4-983-657-01	KNOB (AMS)		* 17	2-347-385-01	CUSHION	
2	2-347-248-03	WINDOW (FL)		* 18	A-4591-309-A	PSW BOARD, COMPLETE	
3	2-347-020-01	WINDOW (RC)		19	2-338-688-01	SCREW, STEP TAPPING	
4	4-942-568-41	EMBLEM (NO.5), SONY		20	3-670-155-11	LEG	
5	2-347-240-01	PANEL, FRONT		* 21	2-347-054-11	BRACKET, RACK MOUNT	
6	2-347-247-01	LID (MD)		22	3-704-366-01	SCREW (CASE) (M3X8)	
7	2-346-662-01	BUTTON (E)		23	2-347-234-01	CASE	
8	2-347-246-01	BUTTON (MD)		24	1-757-252-11	WIRE, FLAT TYPE (23 CORE)	
* 9	A-4591-311-A	SIRCS BOARD, COMPLETE (J)		25	2-347-251-01	SHEET (S-SW), BLIND	
* 9	A-4591-359-A	SIRCS BOARD, COMPLETE (EXCEPT J)		26	2-346-775-01	ESCUTCHEON	
10	4-228-630-11	SPRING (LID), TENSION COIL		* 27	2-347-268-02	INSULATED PLATE (B)	
11	4-951-620-01	SCREW (2.6X8), +BVTP		28	3-831-441-11	CUSHION (F)	
12	2-335-924-31	BUTTON (EXCEPT CN,1CN)		29	4-951-620-31	SCREW (2.6), +BVTP	
* 12	2-335-924-41	BUTTON (CN,1CN)		30	3-663-748-01	WASHER, SUS (UC)	
* 13	A-4591-313-A	FL BOARD, COMPLETE		31	1-500-422-11	BEAD, FERRITE (UC, 1UC, 1GC)	
* 14	A-4591-312-A	KEY BOARD, COMPLETE		32	4-374-846-11	COVER, CAPACITOR, CAP TYPE (GC, 1GC)	
15	3-367-431-01	KNOB (BAL)		33	1-543-830-11	CLAMP, SLEEVE FERRITE (EXCEPT J)	
* 16	A-4591-310-A	HP BOARD, COMPLETE		34	1-543-798-11	FILTER, CLAMP (FERRITE CORE) (1UC, 1GC)	

3-2. REAR SECTION



Ref. No.	Part No.	Description	Remarks	Ref. No.	Part No.	Description	Remarks
* 51	2-338-741-01	HOLDER, PWB		△ 63	1-790-345-21	CORD, POWER (J)	
* 52	2-347-239-01	SCREW (+BV WH M3), STEP		△ 63	1-782-510-11	CORD, POWER (CN, 1CN)	
* 53	A-4591-307-A	AC BOARD, COMPLETE (J)		△ 63	1-792-149-12	CORD, POWER (1UC)	
* 53	A-4591-308-A	AC BOARD, COMPLETE (GC, 1GC)		* 64	A-4591-317-A	BAL BOARD, COMPLETE (J)	
* 53	A-4591-358-A	AC BOARD, COMPLETE (UC)		* 64	A-4591-387-A	BAL BOARD, COMPLETE (EXCEPT J)	
* 53	A-4591-365-A	AC BOARD, COMPLETE (CN, 1CN)		* 65	3-703-044-26	LABEL, CAUTION (UC, 1UC)	
* 53	A-4591-389-A	AC MBOARD, COMPLETE (1UC)		* 67	2-347-382-02	INSULATED PLATE (C)	
54	4-910-502-01	CUSHION, ANTENNA		* 68	2-347-384-01	INSULATED PLATE (D)	
55	3-831-441-11	CUSHION (F)		69	3-564-027-01	FELT, LIMITER	
* 56	2-347-418-01	GASKET		△ PT1	1-435-758-11	TRANSFORMER, POWER (EXCEPT 1GC)	
* 57	A-4591-319-A	CNT BOARD, COMPLETE (J)		△ PT1	1-435-758-21	TRANSFORMER, POWER (1GC)	
* 57	A-4591-320-A	CNT BOARD, COMPLETE (EXCEPT J)		MDM-7SC	A-4677-420-A	DEVICE MINI DISC MDM-7SC	
58	2-347-252-01	INSULATOR					
59	1-757-254-12	WIRE, FLAT TYPE (27 CORE)					
60	1-757-253-12	WIRE, FLAT TYPE (23 CORE)					
* 61	A-4591-314-A	MAIN BOARD, COMPLETE (J)					
* 61	A-4591-386-A	MAIN BOARD, COMPLETE (EXCEPT J)					
62	3-703-244-00	BUSHING (2104), CORD (EXCEPT 1UC)					
62	4-916-783-01	BUSHING (3P31, CORD), CORD (1UC)					
△ 63	1-751-275-11	CORD, POWER (GC, 1GC)					
△ 63	1-783-531-41	CORD, POWER (UC)					

△ "w ... | hx △ "Vw:cp h ... x |
 ¶ Q i , b h t O A s ... p b {
 H l o f i x | c f w ... ; ' o < ^ M {

The components identified by
 mark △ or dotted line with mark
 △ are critical for safety.
 Replace only with part number
 specified.

Les composants identifiés par
 une marque △ sont critiques
 pour la sécurité.
 Ne les remplacer que par une
 pièce portant le numéro spécifié.

SECTION 4 ELECTRICAL PARTS LIST

AC

BAL

† ? > ... fl ‡

† ; ~ w « ‡

• \ \ t G L ^ o M ... A x . ; ...
p K h s ~ \$ t | • z ~ t ' M o M
... q s ø U K b {

• 9 9 " j = ... h h • z ~ t ' M

o M ... q s ø U K b {

• a , w ... x O ' o S d {

• fl ^ - w o p V ' x ' ' b {

\$IV

• ~ w o x t t ' o K b {

y y ~ {

- ' = - {

• ... « » w o p y x) ' b {

• # 1 R . W I V p " V

% IV s x # 1 g " 1 "

\$ 2 2

S & M

\$ j i p ... f b q V x , X ° ¢
x Ø z « d o f ' o X i ^ M {

△ „ w ... | h x △ „ w : ¢ p
h ... x | ¶ Q i , b h t |
O A s ... p b {
H l o f l x | c f w ... ;
' o < ^ M {

Note:

When indicating parts by reference number, please include the board name.

The components identified by mark △ or dotted line with mark △ are critical for safety. Replace only with part number specified.

Les composants identifiés par une marque △ sont critiques pour la sécurité. Ne les remplacer que par une pièce portant le numéro spécifié.

- Due to standardization, replacements in the parts list may be different from the parts specified in the diagrams or the components used on the set.

- XX, -X mean standardized parts, so they may have some difference from the original one.
- Items marked “*” are not stocked since they are seldom required for routine service. Some delay should be anticipated when ordering these items.
- CAPACITORS:
uF: µF
- RESISTORS
All resistors are in ohms.
METAL: metal-film resistor
METAL OXIDE: Metal Oxide-film resistor
F: nonflammable

- COILS
uH: µH
- SEMICONDUCTORS
In each case, u: µ, for example:
uA...: µA... , uPA...: µPA... ,
uPB...: µPB... , uPC...: µPC... ,
uPD...: µPD...
- Abbreviation
CN : MDS-E12 : Chinese
GC : MDS-E12 : AEP, E
UC : MDS-E12 : US, Canadian
1CN : MDS-E12/1 : Chinese
1GC : MDS-E12/1 : AEP, E
1UC : MDS-E12/1 : US, Canadian

Ref. No.	Part No.	Description	Remarks	Ref. No.	Part No.	Description	Remarks
*	A-4591-307-A	AC BOARD, COMPLETE (J)		*	A-4591-317-A	BAL BOARD, COMPLETE (J)	
*	A-4591-308-A	AC BOARD, COMPLETE (GC, 1GC)		*	A-4591-387-A	BAL BOARD, COMPLETE (EXCEPT J)	
*	A-4591-358-A	AC BOARD, COMPLETE (UC)		*****			
*	A-4591-365-A	AC BOARD, COMPLETE (CN, 1CN)		< CAPACITOR >			
	A-4591-389-A	AC BOARD, COMPLETE (1UC)					

	2-347-238-01	BRACKET (VS)		C500	1-136-165-00	MYLAR 0.1uF 5.00% 50V	
		< CAPACITOR >		C501	1-136-165-00	MYLAR 0.1uF 5.00% 50V	
△ C1	1-113-925-11	CERAMIC 0.01uF 20.00% 250V		C502	1-126-951-11	ELECT 470uF 20.00% 35V	
△ C2	1-113-925-11	CERAMIC 0.01uF 20.00% 250V		C503	1-126-951-11	ELECT 470uF 20.00% 35V	
		< CONNECTOR >		C504	1-119-800-11	ELECT 100uF 20.00% 25V	
CN1	1-564-321-00	PIN, CONNECTOR 2P (1UC)		C505	1-119-800-11	ELECT 100uF 20.00% 25V	
* CN1	1-580-230-11	PIN, CONNECTOR (PC BOARD) 2P (UC)		C506	1-126-948-11	ELECT 100uF 20.00% 35V	
CN1	1-774-108-11	PIN, CONNECTOR (PC BOARD) (J, GC, CN, 1GC, 1CN)		C507	1-126-948-11	ELECT 100uF 20.00% 35V	
CN2	1-564-321-00	PIN, CONNECTOR 2P (UC)		C508	1-130-467-00	MYLAR 470PF 5% 50V	
CN4	1-564-506-11	PLUG, CONNECTOR 3P		C509	1-130-467-00	MYLAR 470PF 5% 50V	
CN5	1-564-507-11	PLUG, CONNECTOR 4P		C510	1-130-467-00	MYLAR 470PF 5% 50V	
* CN6	1-564-321-21	PIN, CONNECTOR 2P (UC)		C511	1-126-022-11	ELECT 47uF 20.00% 25V	
		< COIL >		C512	1-126-022-11	ELECT 47uF 20.00% 25V	
△ L1	1-421-915-11	COIL, LINE FILTER		C513	1-130-467-00	MYLAR 470PF 5% 50V	
		< SWITCH >		C514	1-130-467-00	MYLAR 470PF 5% 50V	
△ S1	1-762-753-11	SWITCH, VOLTAGE SELECTION (GC, 1GC)		C515	1-130-467-00	MYLAR 470PF 5% 50V	
		< VARISTOR >		C516	1-126-022-11	ELECT 47uF 20.00% 25V	
△ ZDR1	1-809-267-11	VARISTOR ERZV10D471		C517	1-126-022-11	ELECT 47uF 20.00% 25V	
*****				C518	1-119-825-11	ELECT 22uF 20.00% 25V	
				C519	1-119-825-11	ELECT 22uF 20.00% 25V	
				C520	1-119-799-11	ELECT 47uF 20.00% 25V	
				C521	1-119-799-11	ELECT 47uF 20.00% 25V	
				C522	1-126-049-11	ELECT 22uF 20.00% 25V	
				C523	1-107-611-11	CAPACITOR 100PF 5.00% 500V	
				C524	1-107-611-11	CAPACITOR 100PF 5.00% 500V	
				C525	1-119-803-31	ELECT 470uF 20.00% 25V	
				C526	1-119-803-31	ELECT 470uF 20.00% 25V	
				C527	1-126-049-11	ELECT 22uF 20.00% 25V	
				C528	1-107-611-11	CAPACITOR 100PF 5.00% 500V	
				C529	1-107-611-11	CAPACITOR 100PF 5.00% 500V	

Ref. No.	Part No.	Description	Remarks	Ref. No.	Part No.	Description	Remarks
C530	1-119-803-31	ELECT	470uF 20.00% 25V			< FILTER >	
C531	1-119-803-31	ELECT	470uF 20.00% 25V				
C532	1-119-799-11	ELECT	47uF 20.00% 25V	FL500	1-410-397-21	FERRITE BEAD INDUCTOR (EXCEPT J)	
C533	1-119-799-11	ELECT	47uF 20.00% 25V	FL501	1-410-397-21	FERRITE BEAD INDUCTOR (EXCEPT J)	
C534	1-119-799-11	ELECT	47uF 20.00% 25V	FL502	1-410-397-21	FERRITE BEAD INDUCTOR (EXCEPT J)	
				FL503	1-410-397-21	FERRITE BEAD INDUCTOR (EXCEPT J)	
C535	1-107-202-00	MICA	10PF 5% 500V	FL504	1-236-130-11	FILTER, LOW PASS (EXCEPT J)	
C536	1-107-202-00	MICA	10PF 5% 500V				
C537	1-107-202-00	MICA	10PF 5% 500V	FL505	1-236-130-11	FILTER, LOW PASS (EXCEPT J)	
C538	1-107-202-00	MICA	10PF 5% 500V	FL506	1-236-130-11	FILTER, LOW PASS (EXCEPT J)	
C539	1-119-799-11	ELECT	47uF 20.00% 25V	FL507	1-236-130-11	FILTER, LOW PASS (EXCEPT J)	
						< IC >	
C541	1-126-941-11	ELECT	470uF 20.00% 25V	IC500	8-759-231-59	IC M5F7815L	
C542	1-126-941-11	ELECT	470uF 20.00% 25V	IC501	8-759-245-87	IC M5F7915L	
C543	1-126-941-11	ELECT	470uF 20.00% 25V	IC503	8-759-602-83	IC M5238P (UC, GC, CN)	
C544	1-126-941-11	ELECT	470uF 20.00% 25V	IC503	8-759-710-59	IC NJM4580D-D (J, 1UC, 1GC, 1CN)	
				IC504	8-759-900-72	IC NE5532P (UC, GC, CN)	
		< CONNECTOR >					
* CN500	1-778-327-11	CONNECTOR (RECEPTACLE)		IC504	8-759-710-59	IC NJM4580D-D (J, 1UC, 1GC, 1CN)	
* CN501	1-778-327-11	CONNECTOR (RECEPTACLE)		IC505	8-759-900-72	IC NE5532P (UC, GC, CN)	
* CN502	1-778-326-11	CONNECTOR (PLUG)		IC505	8-759-710-59	IC NJM4580D-D (J, 1UC, 1GC, 1CN)	
* CN503	1-778-326-11	CONNECTOR (PLUG)		IC506	8-759-900-72	IC NE5532P (UC, GC, CN)	
CN504	1-778-447-11	CONNECTOR, BOARD TO BOARD 13P		IC506	8-759-710-59	IC NJM4580D-D (J, 1UC, 1GC, 1CN)	
		< DIODE >				< TRANSISTOR >	
D500	8-719-200-82	DIODE 11ES2-TA2B					
D501	8-719-200-82	DIODE 11ES2-TA2B		Q500	8-729-141-30	TRANSISTOR 2SC2878A-TPE2	
D502	8-719-200-82	DIODE 11ES2-TA2B		Q501	8-729-140-96	TRANSISTOR 2SD774-T-34	
D503	8-719-200-82	DIODE 11ES2-TA2B				< RESISTOR >	
D504	8-719-200-82	DIODE 11ES2-TA2B					
				R500	1-260-083-11	CARBON 47 5% 1/2W	
D505	8-719-200-82	DIODE 11ES2-TA2B		R501	1-249-417-11	CARBON 1K 5% 1/4W F	
D508	8-719-986-56	DIODE HZS24-3LTA		R502	1-249-429-11	CARBON 10K 5% 1/4W	
D509	8-719-986-56	DIODE HZS24-3LTA		R503	1-249-429-11	CARBON 10K 5% 1/4W	
D510	8-719-986-56	DIODE HZS24-3LTA		R504	1-249-429-11	CARBON 10K 5% 1/4W	
D511	8-719-986-56	DIODE HZS24-3LTA					
D512	8-719-986-56	DIODE HZS24-3LTA		R505	1-249-433-11	CARBON 22K 5% 1/4W	
D513	8-719-986-56	DIODE HZS24-3LTA		R506	1-249-435-11	CARBON 33K 5% 1/4W	
D514	8-719-986-56	DIODE HZS24-3LTA		R507	1-249-441-11	CARBON 100K 5% 1/4W	
D515	8-719-986-56	DIODE HZS24-3LTA		R508	1-249-441-11	CARBON 100K 5% 1/4W	
D516	8-719-986-56	DIODE HZS24-3LTA		R509	1-249-435-11	CARBON 33K 5% 1/4W	
D517	8-719-986-56	DIODE HZS24-3LTA		R510	1-249-441-11	CARBON 100K 5% 1/4W	
D518	8-719-986-56	DIODE HZS24-3LTA		R511	1-249-441-11	CARBON 100K 5% 1/4W	
D519	8-719-986-56	DIODE HZS24-3LTA		R512	1-247-807-31	CARBON 100 5% 1/4W	
D520	8-719-986-56	DIODE HZS24-3LTA		R513	1-249-429-11	CARBON 10K 5% 1/4W	
D521	8-719-986-56	DIODE HZS24-3LTA		R514	1-249-429-11	CARBON 10K 5% 1/4W	
D522	8-719-986-56	DIODE HZS24-3LTA		R515	1-247-807-31	CARBON 100 5% 1/4W	
D523	8-719-986-56	DIODE HZS24-3LTA		R516	1-249-429-11	CARBON 10K 5% 1/4W	
D524	8-719-911-19	DIODE 1SS133T-72		R517	1-249-429-11	CARBON 10K 5% 1/4W	
D525	8-719-911-19	DIODE 1SS133T-72		R518	1-249-430-11	CARBON 12K 5% 1/4W	
D526	8-719-200-82	DIODE 11ES2-TA2B		R519	1-247-843-11	CARBON 3.3K 5% 1/4W	
D527	8-719-200-82	DIODE 11ES2-TA2B		R520	1-249-417-11	CARBON 1K 5% 1/4W F	
D528	8-719-911-19	DIODE 1SS133T-72		R521	1-249-437-11	CARBON 47K 5% 1/4W	
D529	8-719-200-82	DIODE 11ES2-TA2B		R522	1-249-421-11	CARBON 2.2K 5% 1/4W F	
D530	8-719-200-82	DIODE 11ES2-TA2B		R523	1-249-427-11	CARBON 6.8K 5% 1/4W F	
		< TERMINAL BOARD >		R524	1-215-435-00	METAL 3.9K 1% 1/4W	
EP500	1-537-770-21	TERMINAL BOARD, GROUND		R525	1-215-435-00	METAL 3.9K 1% 1/4W	
				R526	1-215-435-00	METAL 3.9K 1% 1/4W	
				R527	1-215-435-00	METAL 3.9K 1% 1/4W	
				R528	1-247-850-11	CARBON 6.2K 5% 1/4W	
				R529	1-249-401-11	CARBON 47 5% 1/4W F	

Ref. No.	Part No.	Description			Remarks	Ref. No.	Part No.	Description			Remarks
R530	1-249-427-11	CARBON	6.8K	5%	1/4W F	C106	1-162-970-11	C106	0.01uF	10%	25V
R531	1-247-887-00	CARBON	220K	5%	1/4W	C107	1-162-970-11	C107	0.01uF	10%	25V
R532	1-249-427-11	CARBON	6.8K	5%	1/4W F	C108	1-162-969-11	C108	0.0068uF	10%	25V
R533	1-247-850-11	CARBON	6.2K	5%	1/4W	C109	1-164-677-11	CERAMIC CHIP	0.033uF	10.00%	16V
R534	1-249-401-11	CARBON	47	5%	1/4W F	C110	1-163-038-91	CERAMIC CHIP	0.1uF		25V
R535	1-249-417-11	CARBON	1K	5%	1/4W F	C111	1-117-720-11	CERAMIC CHIP	4.7uF		10V
R536	1-249-417-11	CARBON	1K	5%	1/4W F	C112	1-110-563-11	CERAMIC CHIP	0.068uF	10.00%	16V
R537	1-249-430-11	CARBON	12K	5%	1/4W	C113	1-162-968-11	C113	0.0047uF	10%	50V
R538	1-247-843-11	CARBON	3.3K	5%	1/4W	C114	1-125-837-91	CERAMIC CHIP	1uF	10%	6.3V
R539	1-249-437-11	CARBON	47K	5%	1/4W	C115	1-162-966-11	C115	0.0022uF	10%	50V
R540	1-249-417-11	CARBON	1K	5%	1/4W F	C116	1-164-227-11	C116	0.022uF	10%	25V
R541	1-249-421-11	CARBON	2.2K	5%	1/4W F	C117	1-162-970-11	C117	0.01uF	10%	25V
R542	1-249-427-11	CARBON	6.8K	5%	1/4W F	C118	1-165-176-11	CERAMIC CHIP	0.047uF	10.00%	16V
R543	1-215-435-00	METAL	3.9K	1%	1/4W	C119	1-165-176-11	CERAMIC CHIP	0.047uF	10.00%	16V
R544	1-215-435-00	METAL	3.9K	1%	1/4W	C120	1-164-156-11	C120	0.1uF		25V
R546	1-249-401-11	CARBON	47	5%	1/4W F	C121	1-164-156-11	C121	0.1uF		25V
R547	1-249-427-11	CARBON	6.8K	5%	1/4W F	C125	1-117-720-11	CERAMIC CHIP	4.7uF		10V
R548	1-247-887-00	CARBON	220K	5%	1/4W	C128	1-164-156-11	C128	0.1uF		25V
R549	1-249-427-11	CARBON	6.8K	5%	1/4W F	C131	1-117-720-11	CERAMIC CHIP	4.7uF		10V
R550	1-215-435-00	METAL	3.9K	1%	1/4W	C132	1-164-156-11	C132	0.1uF		25V
R551	1-215-435-00	METAL	3.9K	1%	1/4W	C133	1-164-156-11	C133	0.1uF		25V
R552	1-247-850-11	CARBON	6.2K	5%	1/4W	C141	1-126-206-11	C141	100uF	20%	6.3V
R553	1-249-401-11	CARBON	47	5%	1/4W F	C142	1-164-156-11	C142	0.1uF		25V
R554	1-249-417-11	CARBON	1K	5%	1/4W F	C143	1-164-156-11	C143	0.1uF		25V
R555	1-249-417-11	CARBON	1K	5%	1/4W F	C144	1-162-970-11	C144	0.01uF	10%	25V
R556	1-249-439-11	CARBON	68K	5%	1/4W	C145	1-164-156-11	C145	0.1uF		25V
R557	1-249-439-11	CARBON	68K	5%	1/4W	C151	1-117-370-11	CERAMIC CHIP	10uF		10V
R560	1-249-401-11	CARBON	47	5%	1/4W F	C152	1-164-156-11	C152	0.1uF		25V
R561	1-249-401-11	CARBON	47	5%	1/4W F	C153	1-164-156-11	C153	0.1uF		25V
R562	1-249-401-11	CARBON	47	5%	1/4W F	C154	1-126-206-11	C154	100uF	20%	6.3V
R563	1-249-401-11	CARBON	47	5%	1/4W F	C155	1-164-156-11	C155	0.1uF		25V
R574	1-247-850-11	CARBON	6.2K	5%	1/4W	C156	1-164-156-11	C156	0.1uF		25V
R576	1-249-433-11	CARBON	22K	5%	1/4W	C157	1-164-156-11	C157	0.1uF		25V
R577	1-247-850-11	CARBON	6.2K	5%	1/4W	C158	1-162-927-11	C158	100PF	5%	50V
R578	1-247-850-11	CARBON	6.2K	5%	1/4W	C159	1-162-927-11	C159	100PF	5%	50V
R579	1-249-433-11	CARBON	22K	5%	1/4W	C160	1-162-927-11	C160	100PF	5%	50V
R580	1-249-433-11	CARBON	22K	5%	1/4W	C161	1-162-970-11	C161	0.01uF	10%	25V
R581	1-247-850-11	CARBON	6.2K	5%	1/4W	C162	1-162-970-11	C162	0.01uF	10%	25V
R582	1-247-850-11	CARBON	6.2K	5%	1/4W	C163	1-125-891-11	CERAMIC CHIP	0.47uF	10.00%	10V
		< RELAY >				C164	1-162-927-11	C164	100PF	5%	50V
RY500	1-755-188-11	RELAY				C165	1-162-968-11	C165	0.0047uF	10%	50V
		< SWITCH >				C166	1-125-891-11	CERAMIC CHIP	0.47uF	10.00%	10V
						C167	1-164-245-11	CERAMIC CHIP	0.015uF	10.00%	25V
S500	1-692-721-11	SWITCH, SLIDE (OUTPUT LEVEL)				C169	1-164-156-11	C169	0.1uF		25V
		< THERMISTOR(POSITIVE) >				C171	1-164-156-11	C171	0.1uF		25V
THP500	1-801-671-11	THERMISTOR, POSITIVE				C172	1-164-156-11	C172	0.1uF		25V
*****						C180	1-117-370-11	CERAMIC CHIP	10uF		10V
		A-4725-492-A	BD BOARD, COMPLETE			C181	1-126-206-11	C181	100uF	20%	6.3V
		*****				C182	1-163-038-91	CERAMIC CHIP	0.1uF		25V
		< CAPACITOR >				C183	1-164-156-11	C183	0.1uF		25V
C101	1-135-259-11	TANTAL. CHIP	10uF	20.00%	6.3V	C184	1-117-970-11	ELECT CHIP	22uF	20.00%	10V
C102	1-135-259-11	TANTAL. CHIP	10uF	20.00%	6.3V	C185	1-131-872-91	CERAMIC CHIP	1000PF	10%	630V
C103	1-162-970-11	C103	0.01uF	10%	25V	C191	1-126-206-11	C191	100uF	20%	6.3V
C104	1-164-227-11	C104	0.022uF	10%	25V	C192	1-164-156-11	C192	0.1uF		25V
C105	1-115-416-11	CERAMIC CHIP	0.001uF	5.00%	25V	C193	1-126-206-11	C193	100uF	20%	6.3V
						C194	1-164-156-11	C194	0.1uF		25V
						C195	1-164-156-11	C195	0.1uF		25V
						C196	1-164-156-11	C196	0.1uF		25V
						C1401	1-117-720-11	CERAMIC CHIP	4.7uF		10V

Ref. No.	Part No.	Description	Remarks	Ref. No.	Part No.	Description	Remarks
< CONNECTOR >				Q133	8-729-402-93	TRANSISTOR	UN5214-TX
CN101	1-766-833-21	CONNECTOR, FFC/FPC (ZIF) 21P		Q134	8-729-402-93	TRANSISTOR	UN5214-TX
CN102	1-784-835-21	CONNECTOR, FFC(LIF(NON-ZIF))27P		Q181	8-729-018-75	TRANSISTOR	2SJ278MYTR
CN103	1-784-834-21	CONNECTOR, FFC(LIF(NON-ZIF))23P		Q182	8-729-017-65	TRANSISTOR	2SK1764KYTR
* CN104	1-580-055-21	PIN, CONNECTOR (SMD) 2P		< RESISTOR >			
CN105	1-784-859-21	CONNECTOR, FFC(LIF(NON-ZIF))7P		R101	1-216-829-11	R101	4.7K 5% 1/16W
< DIODE >				R102	1-216-853-11	R102	470K 5% 1/16W
D101	8-719-988-61	DIODE 1SS355TE-17		R103	1-216-863-11	RES-CHIP	3.3M 5% 1/16W
D181	8-719-080-81	DIODE FS1J6		R104	1-216-853-11	R104	470K 5% 1/16W
D183	8-719-080-81	DIODE FS1J6		R105	1-216-825-11	R105	2.2K 5% 1/16W
< IC >				R106	1-216-825-11	R106	2.2K 5% 1/16W
IC101	8-752-080-95	IC CXA2523AR		R107	1-216-825-11	R107	2.2K 5% 1/16W
IC102	8-759-473-51	IC TLV2361CDBV		R108	1-216-833-11	R108	10K 5% 1/16W
IC141	8-759-836-79	IC BH6519FS-E2		R109	1-216-845-11	R109	100K 5% 1/16W
IC151	8-752-404-64	IC CXD2662R		R110	1-216-845-11	R110	100K 5% 1/16W
IC153	6-700-052-01	IC MSM51V17400F-50TS-K		R111	1-216-833-11	R111	10K 5% 1/16W
IC171	8-759-096-87	IC TC7WU04FU(TE12R)		R112	1-216-829-11	R112	4.7K 5% 1/16W
IC181	8-759-481-17	IC MC74ACT08DTR2		R113	1-216-833-11	R113	10K 5% 1/16W
IC190	8-759-460-72	IC BA033FP-E2		R114	1-216-827-11	R114	3.3K 5% 1/16W
IC195	8-759-640-41	IC BR24C08F-E2		R115	1-216-833-11	R115	10K 5% 1/16W
< JUMPER RESISTOR >				R116	1-216-839-11	R116	33K 5% 1/16W
JW201	1-216-295-91	SHORT 0		R117	1-216-837-11	R117	22K 5% 1/16W
JW202	1-216-295-91	SHORT 0		R118	1-218-855-11	METAL CHIP	2.2K 0.5% 1/10W
JW203	1-216-295-91	SHORT 0		R119	1-218-863-11	METAL CHIP	4.7K 0.5% 1/10W
JW903	1-216-295-91	SHORT 0		R120	1-218-889-11	METAL CHIP	56K 0.5% 1/10W
JW904	1-216-295-91	SHORT 0		R121	1-218-863-11	METAL CHIP	4.7K 0.5% 1/10W
< COIL >				R122	1-218-855-11	METAL CHIP	2.2K 0.5% 1/10W
L101	1-500-245-11	FERRITE 0uH		R123	1-216-819-11	R123	680 5% 1/16W
L102	1-500-245-11	FERRITE 0uH		R124	1-216-809-11	R124	100 5% 1/16W
L103	1-500-245-11	FERRITE 0uH		R125	1-216-815-11	R125	330 5% 1/16W
L105	1-414-235-22	FERRITE 0uH		R126	1-216-819-11	R126	680 5% 1/16W
L106	1-500-245-11	FERRITE 0uH		R127	1-216-845-11	R127	100K 5% 1/16W
L121	1-500-245-11	FERRITE 0uH		R128	1-219-724-11	METAL CHIP	1 1% 1/4W
L122	1-500-245-11	FERRITE 0uH		R129	1-216-298-00	R129	2.2 5% 1/10W
L131	1-500-245-11	FERRITE 0uH		R130	1-216-829-11	R130	4.7K 5% 1/16W
L141	1-216-296-11	SHORT 0		R131	1-216-833-11	R131	10K 5% 1/16W
L142	1-216-296-11	SHORT 0		R132	1-216-841-11	R132	47K 5% 1/16W
L143	1-216-296-11	SHORT 0		R133	1-216-821-11	R133	1K 5% 1/16W
L144	1-216-296-11	SHORT 0		R134	1-216-821-11	R134	1K 5% 1/16W
L145	1-216-296-11	SHORT 0		R135	1-216-821-11	R135	1K 5% 1/16W
L146	1-469-855-21	FERRITE 0uH		R136	1-216-295-91	SHORT 0	
L147	1-469-855-21	FERRITE 0uH		R138	1-216-833-11	R138	10K 5% 1/16W
L161	1-500-245-11	FERRITE 0uH		R150	1-216-833-11	R150	10K 5% 1/16W
L171	1-500-245-11	FERRITE 0uH		R151	1-216-833-11	R151	10K 5% 1/16W
L180	1-469-855-21	FERRITE 0uH		R154	1-216-833-11	R154	10K 5% 1/16W
L181	1-469-855-21	FERRITE 0uH		R155	1-216-864-11	R155	0 5% 1/16W
L182	1-500-245-11	FERRITE 0uH		R156	1-216-864-11	R156	0 5% 1/16W
L183	1-216-296-11	SHORT 0		R157	1-216-809-11	R157	100 5% 1/16W
L184	1-216-296-11	SHORT 0		R158	1-216-809-11	R158	100 5% 1/16W
< TRANSISTOR >				R159	1-216-833-11	R159	10K 5% 1/16W
Q101	8-729-403-35	TRANSISTOR UN5113-TX		R160	1-216-833-11	R160	10K 5% 1/16W
Q121	8-729-403-35	TRANSISTOR UN5113-TX		R161	1-216-833-11	R161	10K 5% 1/16W
Q122	8-729-101-07	TRANSISTOR 2SB798-T1DK		R163	1-216-809-11	R163	100 5% 1/16W
Q131	8-729-026-53	TRANSISTOR 2SA1576A-T106-QR		R164	1-216-809-11	R164	100 5% 1/16W
Q132	8-729-903-10	TRANSISTOR FMW1-T-148		R165	1-216-809-11	R165	100 5% 1/16W
				R167	1-216-833-11	R167	10K 5% 1/16W
				R168	1-216-845-11	R168	100K 5% 1/16W
				R169	1-216-855-11	R169	680K 5% 1/16W
				R170	1-216-827-11	R170	3.3K 5% 1/16W
				R171	1-216-821-11	R171	1K 5% 1/16W

— 25 —

Ref. No.	Part No.	Description		Remarks		Ref. No.	Part No.	Description		Remarks	
< RESISTOR >						< CONNECTOR >					
R600	1-247-807-31	CARBON	100	5%	1/4W	* CN720	1-566-969-11	HOUSING, CONNECTOR(PC BOARD)7P			
R601	1-247-807-31	CARBON	100	5%	1/4W	CN721	1-815-144-11	PIN, CONNECTOR 8P (PC BOARD)			
R602	1-249-417-11	CARBON	1K	5%	1/4W F	CN722	1-779-560-21	CONNECTOR,FFC(LIF(NON-ZIF))23P			
R603	1-249-417-11	CARBON	1K	5%	1/4W F	< DIODE >					
R604	1-247-843-11	CARBON	3.3K	5%	1/4W	D720	8-719-109-97	DIODE	RD6.8ES-T2B2		
R605	1-247-843-11	CARBON	3.3K	5%	1/4W	D721	8-719-109-97	DIODE	RD6.8ES-T2B2		
R606	1-247-807-31	CARBON	100	5%	1/4W	< FLUORESCENT INDICATOR TUBE >					
R607	1-247-807-31	CARBON	100	5%	1/4W	FLK720	1-518-714-12	INDICATOR TUBE, FLUORESCENT			
R608	1-249-417-11	CARBON	1K	5%	1/4W F	< RESISTOR >					
R609	1-249-417-11	CARBON	1K	5%	1/4W F	R760	1-249-425-11	CARBON	4.7K	5%	1/4W F
R610	1-249-433-11	CARBON	22K	5%	1/4W	R761	1-247-843-11	CARBON	3.3K	5%	1/4W
R611	1-249-433-11	CARBON	22K	5%	1/4W	R762	1-249-421-11	CARBON	2.2K	5%	1/4W F
R612	1-249-417-11	CARBON	1K	5%	1/4W F	R763	1-249-429-11	CARBON	10K	5%	1/4W
R613	1-249-417-11	CARBON	1K	5%	1/4W F	< SWITCH >					
R614	1-249-411-11	CARBON	330	5%	1/4W	S720	1-762-875-21	SWITCH, KEYBOARD (VARI SPEED)			
R615	1-249-411-11	CARBON	330	5%	1/4W	S721	1-762-875-21	SWITCH, KEYBOARD (+)			
R616	1-249-429-11	CARBON	10K	5%	1/4W	S722	1-762-875-21	SWITCH, KEYBOARD (-)			
R617	1-249-429-11	CARBON	10K	5%	1/4W	S723	1-762-875-21	SWITCH, KEYBOARD (EJECT)			
R618	1-249-417-11	CARBON	1K	5%	1/4W F	*****					
R619	1-249-417-11	CARBON	1K	5%	1/4W F	* A-4591-310-A	HP BOARD, COMPLETE		*****		
R620	1-247-843-11	CARBON	3.3K	5%	1/4W	< CAPACITOR >					
R621	1-247-843-11	CARBON	3.3K	5%	1/4W	C730	1-162-294-31	CERAMIC	0.001uF	10%	50V
R622	1-247-843-11	CARBON	3.3K	5%	1/4W	C731	1-162-294-31	CERAMIC	0.001uF	10%	50V
R623	1-247-843-11	CARBON	3.3K	5%	1/4W	< CONNECTOR >					
R624	1-247-843-11	CARBON	3.3K	5%	1/4W	CN730	1-564-506-11	PLUG, CONNECTOR 3P			
R625	1-249-417-11	CARBON	1K	5%	1/4W F	< FILTER >					
R626	1-249-417-11	CARBON	1K	5%	1/4W F	FL730	1-410-397-21	FERRITE BEAD INDUCTOR			
R627	1-249-417-11	CARBON	1K	5%	1/4W F	FL731	1-410-397-21	FERRITE BEAD INDUCTOR			
R628	1-249-417-11	CARBON	1K	5%	1/4W F	< JACK >					
R629	1-249-417-11	CARBON	1K	5%	1/4W F	J730	1-770-904-11	JACK (LARGE TYPE) (PHONES)			
R630	1-249-417-11	CARBON	1K	5%	1/4W F	< RESISTOR >					
R631	1-249-417-11	CARBON	1K	5%	1/4W F	R730	1-249-393-11	CARBON	10	5%	1/4W F
R632	1-249-417-11	CARBON	1K	5%	1/4W F	R731	1-249-393-11	CARBON	10	5%	1/4W F
R633	1-249-417-11	CARBON	1K	5%	1/4W F	< VARIABLE RESISTOR >					
R634	1-249-417-11	CARBON	1K	5%	1/4W F	RV730	1-225-302-11	RES, VAR, CARBON 1K/1K (PHONE LEVEL)			
*****						*****					
* A-4591-313-A	FL BOARD, COMPLETE		*****			* A-4591-312-A	KEY BOARD, COMPLETE		*****		
< CAPACITOR >						< CAPACITOR >					
C720	1-124-589-11	ELECT	47uF	20%	16V	< CAPACITOR >					
C722	1-124-589-11	ELECT	47uF	20%	16V	< CAPACITOR >					
C723	1-164-159-11	CERAMIC	0.1uF		50V	C701	1-162-294-31	CERAMIC	0.001uF	10%	50V
< CAPACITOR >						C702	1-164-159-11	CERAMIC	0.1uF		50V
< CAPACITOR >						< CONNECTOR >					
< CAPACITOR >						CN701	1-794-928-11	PIN, CONNECTOR 7P (PC BOARD)			

Ref. No.	Part No.	Description				Remarks	Ref. No.	Part No.	Description				Remarks
< FERRITE BEAD >							C118	1-119-800-11	ELECT	100uF	20.00%	25V	
FB701	1-410-397-21	FERRITE BEAD INDUCTOR					C119	1-119-800-11	ELECT	100uF	20.00%	25V	
		FERRITE BEAD INDUCTOR					C120	1-119-793-11	ELECT	1000uF	20.00%	16V	
FB702	1-410-397-21	FERRITE BEAD INDUCTOR					C121	1-119-793-11	ELECT	1000uF	20.00%	16V	
< RESISTOR >							C124	1-115-339-11	CERAMIC CHIP	0.1uF	10.00%	50V	
R701	1-249-429-11	CARBON	10K	5%	1/4W		C125	1-115-339-11	CERAMIC CHIP	0.1uF	10.00%	50V	
R702	1-249-429-11	CARBON	10K	5%	1/4W		C126	1-104-665-11	ELECT	100uF	20.00%	10V	
R703	1-249-421-11	CARBON	2.2K	5%	1/4W	F	C127	1-115-339-11	CERAMIC CHIP	0.1uF	10.00%	50V	
R704	1-249-421-11	CARBON	2.2K	5%	1/4W	F	C129	1-126-963-11	ELECT	4.7uF	20.00%	50V	
R705	1-249-429-11	CARBON	10K	5%	1/4W		C131	1-126-963-11	ELECT	4.7uF	20.00%	50V	
R706	1-247-843-11	CARBON	3.3K	5%	1/4W		C132	1-104-656-11	ELECT	2200uF	20.00%	6.3V	
R707	1-247-843-11	CARBON	3.3K	5%	1/4W		C133	1-126-926-11	ELECT	1000uF	20.00%	10V	
R708	1-249-425-11	CARBON	4.7K	5%	1/4W	F	C134	1-115-339-11	CERAMIC CHIP	0.1uF	10.00%	50V	
R709	1-249-421-11	CARBON	2.2K	5%	1/4W	F	C135	1-126-937-11	ELECT	4700uF	20.00%	16V	
R710	1-247-843-11	CARBON	3.3K	5%	1/4W		C136	1-126-933-11	ELECT	100uF	20.00%	16V	
R711	1-249-425-11	CARBON	4.7K	5%	1/4W	F	C137	1-115-339-11	CERAMIC CHIP	0.1uF	10.00%	50V	
R712	1-249-425-11	CARBON	4.7K	5%	1/4W	F	C138	1-115-339-11	CERAMIC CHIP	0.1uF	10.00%	50V	
< SWITCH >							C140	1-115-339-11	CERAMIC CHIP	0.1uF	10.00%	50V	
S700	1-473-779-11	ENCODER, ROTARY (AMS)					C142	1-115-339-11	CERAMIC CHIP	0.1uF	10.00%	50V	
S701	1-762-875-21	SWITCH, KEYBOARD (CLEAR)					C143	1-115-339-11	CERAMIC CHIP	0.1uF	10.00%	50V	
S702	1-762-875-21	SWITCH, KEYBOARD (PLAY/PAUSE)					C200	1-115-339-11	CERAMIC CHIP	0.1uF	10.00%	50V	
S703	1-762-875-21	SWITCH, KEYBOARD (STOP)					C201	1-126-926-11	ELECT	1000uF	20.00%	10V	
S704	1-762-875-21	SWITCH, KEYBOARD (REC)					C202	1-163-222-11	CERAMIC CHIP	5PF	0.25PF	50V	
S705	1-762-875-21	SWITCH, KEYBOARD (LEVEL)					C203	1-163-222-11	CERAMIC CHIP	5PF	0.25PF	50V	
S706	1-762-875-21	SWITCH, KEYBOARD (TIME)					C210	1-163-251-11	CERAMIC CHIP	100PF	5.00%	50V	
S707	1-762-875-21	SWITCH, KEYBOARD (LOCATE)					C211	1-163-251-11	CERAMIC CHIP	100PF	5.00%	50V	
S708	1-762-875-21	SWITCH, KEYBOARD (AUTO CUE)					C212	1-163-251-11	CERAMIC CHIP	100PF	5.00%	50V	
S709	1-762-875-21	SWITCH, KEYBOARD (EDIT/NO)					C214	1-163-251-11	CERAMIC CHIP	100PF	5.00%	50V	
S710	1-762-875-21	SWITCH, KEYBOARD (YES)					C215	1-163-251-11	CERAMIC CHIP	100PF	5.00%	50V	
S711	1-762-875-21	SWITCH, KEYBOARD (REW)					C216	1-163-251-11	CERAMIC CHIP	100PF	5.00%	50V	
S712	1-762-875-21	SWITCH, KEYBOARD (FF)					C217	1-115-339-11	CERAMIC CHIP	0.1uF	10.00%	50V	
*****							C218	1-119-792-21	ELECT	470uF	20.00%	16V	
*	A-4591-314-A	MAIN BOARD, COMPLETE (J)					C219	1-115-339-11	CERAMIC CHIP	0.1uF	10.00%	50V	
*	A-4591-386-A	MAIN BOARD, COMPLETE (EXCEPT J)					C220	1-115-339-11	CERAMIC CHIP	0.1uF	10.00%	50V	
*****							C221	1-119-792-21	ELECT	470uF	20.00%	16V	
	2-347-238-01	BRACKET (VS)					C222	1-110-336-51	MYLAR	120PF	5.00%	50V	
	7-685-647-79	SCREW +BVTP 3X10 TYPE2 IT-3					C223	1-107-611-11	CAPACITOR	100PF	5.00%	500V	
< BATTERY >							C224	1-130-479-00	MYLAR	0.0047uF	5%	50V	
BT100	1-528-887-11	BATTERY, LITHIUM SECONDARY					C225	1-130-471-00	MYLAR	0.001uF	5%	50V	
< CAPACITOR >							C226	1-126-022-11	ELECT	47uF	20.00%	25V	
C102	1-115-339-11	CERAMIC CHIP	0.1uF	10.00%	50V		C227	1-130-467-00	MYLAR	470PF	5%	50V	
C103	1-115-339-11	CERAMIC CHIP	0.1uF	10.00%	50V		C228	1-109-621-00	MICA	220PF	1%	500V	
C104	1-115-339-11	CERAMIC CHIP	0.1uF	10.00%	50V		C229	1-107-611-11	CAPACITOR	100PF	5.00%	500V	
C105	1-119-932-11	ELECT(BLOCK)	22000uF	20.00%	16V		C230	1-107-611-11	CAPACITOR	100PF	5.00%	500V	
C107	1-115-339-11	CERAMIC CHIP	0.1uF	10.00%	50V		C231	1-130-479-00	MYLAR	0.0047uF	5%	50V	
C108	1-126-767-11	ELECT	1000uF	20.00%	16V		C232	1-130-471-00	MYLAR	0.001uF	5%	50V	
C109	1-115-339-11	CERAMIC CHIP	0.1uF	10.00%	50V		C233	1-126-022-11	ELECT	47uF	20.00%	25V	
C110	1-104-665-11	ELECT	100uF	20.00%	25V		C234	1-130-467-00	MYLAR	470PF	5%	50V	
C111	1-104-665-11	ELECT	100uF	20.00%	25V		C235	1-119-799-11	ELECT	47uF	20.00%	25V	
C112	1-115-339-11	CERAMIC CHIP	0.1uF	10.00%	50V		C236	1-119-799-11	ELECT	47uF	20.00%	25V	
C113	1-119-800-11	ELECT	100uF	20.00%	25V		C237	1-126-934-11	ELECT	220uF	20.00%	16V	
C114	1-119-803-31	ELECT	470uF	20.00%	25V		C238	1-126-934-11	ELECT	220uF	20.00%	16V	
C115	1-128-555-91	ELECT	470uF	20.00%	63V		C239	1-119-825-11	ELECT	22uF	20.00%	25V	
C116	1-126-964-11	ELECT	10uF	20.00%	50V		C240	1-119-825-11	ELECT	22uF	20.00%	25V	
C117	1-126-964-11	ELECT	10uF	20.00%	50V		C241	1-104-665-11	ELECT	100uF	20.00%	25V	
C118	1-126-964-11	ELECT	10uF	20.00%	50V		C242	1-130-467-00	MYLAR	470PF	5%	50V	
C119	1-126-964-11	ELECT	10uF	20.00%	50V		C243	1-130-467-00	MYLAR	470PF	5%	50V	
C120	1-126-964-11	ELECT	10uF	20.00%	50V		C244	1-126-049-11	ELECT	22uF	20.00%	25V	
C121	1-126-964-11	ELECT	10uF	20.00%	50V		C245	1-126-049-11	ELECT	22uF	20.00%	25V	

MAIN

Ref. No.	Part No.	Description	Remarks	Ref. No.	Part No.	Description	Remarks
C246	1-119-799-11	ELECT	47uF 20.00% 25V	C355	1-126-916-11	ELECT	1000uF 20.00% 6.3V
C247	1-119-799-11	ELECT	47uF 20.00% 25V	C356	1-115-339-11	CERAMIC CHIP	0.1uF 10.00% 50V
C248	1-119-825-11	ELECT	22uF 20.00% 25V	C357	1-126-916-11	ELECT	1000uF 20.00% 6.3V
C249	1-119-825-11	ELECT	22uF 20.00% 25V	C358	1-163-009-91	CERAMIC CHIP	0.001uF 10.00% 50V
C252	1-126-964-11	ELECT	10uF 20.00% 50V	C359	1-163-251-11	CERAMIC CHIP	100PF 5.00% 50V
C254	1-115-339-11	CERAMIC CHIP	0.1uF 10.00% 50V	C360	1-126-916-11	ELECT	1000uF 20.00% 6.3V
C255	1-119-800-11	ELECT	100uF 20.00% 16V	C361	1-115-339-11	CERAMIC CHIP	0.1uF 10.00% 50V
C256	1-115-339-11	CERAMIC CHIP	0.1uF 10.00% 50V	C633	1-109-621-00	MICA	220PF 1% 500V
C257	1-130-475-00	MYLAR	0.0022uF 5% 50V	C904	1-115-339-11	CERAMIC CHIP	0.1uF 10.00% 50V
C258	1-130-475-00	MYLAR	0.0022uF 5% 50V	C905	1-126-935-11	ELECT	470uF 20.00% 10V
C259	1-119-792-21	ELECT	470uF 20.00% 16V	C906	1-126-935-11	ELECT	470uF 20.00% 10V
C260	1-115-339-11	CERAMIC CHIP	0.1uF 10.00% 50V	C910	1-115-339-11	CERAMIC CHIP	0.1uF 10.00% 50V
C261	1-163-021-91	CERAMIC CHIP	0.01uF 10.00% 50V	C911	1-163-251-11	CERAMIC CHIP	100PF 5.00% 50V
C262	1-119-825-11	ELECT	22uF 20.00% 25V	C912	1-115-339-11	CERAMIC CHIP	0.1uF 10.00% 50V
C263	1-119-825-11	ELECT	22uF 20.00% 25V	C913	1-163-251-11	CERAMIC CHIP	100PF 5.00% 50V
C264	1-107-048-00	MICA	6.8PF 500V	C914	1-115-339-11	CERAMIC CHIP	0.1uF 10.00% 50V
C265	1-107-048-00	MICA	6.8PF 500V	C915	1-163-243-11	CERAMIC CHIP	47PF 5.00% 50V
C266	1-119-799-11	ELECT	47uF 20.00% 25V	C916	1-163-251-11	CERAMIC CHIP	100PF 5.00% 50V
C267	1-119-799-11	ELECT	47uF 20.00% 25V	C918	1-163-251-11	CERAMIC CHIP	100PF 5.00% 50V
C303	1-115-339-11	CERAMIC CHIP	0.1uF 10.00% 50V	C919	1-163-251-11	CERAMIC CHIP	100PF 5.00% 50V
C304	1-136-177-00	MYLAR	1uF 5.00% 50V	C920	1-126-935-11	ELECT	470uF 20.00% 10V
C305	1-104-665-11	ELECT	100uF 20.00% 10V	C921	1-115-339-11	CERAMIC CHIP	0.1uF 10.00% 50V
C306	1-115-339-11	CERAMIC CHIP	0.1uF 10.00% 50V	C924	1-126-933-11	ELECT	100uF 20.00% 16V
C307	1-104-665-11	ELECT	100uF 20.00% 10V	C926	1-115-339-11	CERAMIC CHIP	0.1uF 10.00% 50V
C308	1-115-339-11	CERAMIC CHIP	0.1uF 10.00% 50V	C927	1-115-339-11	CERAMIC CHIP	0.1uF 10.00% 50V
C309	1-115-339-11	CERAMIC CHIP	0.1uF 10.00% 50V	(EXCEPT J)			
C310	1-126-964-11	ELECT	10uF 20.00% 50V	< CONNECTOR >			
C311	1-104-665-11	ELECT	100uF 20.00% 10V	CN101	1-779-291-11	CONNECTOR,FFC(LIF(NON-ZIF))23P	
C312	1-115-339-11	CERAMIC CHIP	0.1uF 10.00% 50V	CN103	1-778-446-11	CONNECTOR, BOARD TO BOARD 13P	
C315	1-104-665-11	ELECT	100uF 20.00% 10V	CN200	1-779-291-11	CONNECTOR,FFC(LIF(NON-ZIF))23P	
C316	1-115-339-11	CERAMIC CHIP	0.1uF 10.00% 50V	CN300	1-569-814-11	CONNECTOR, BOARD TO BOARD 21P	
C317	1-104-665-11	ELECT	100uF 20.00% 10V	* CN302	1-564-511-11	PLUG, CONNECTOR 8P	
C318	1-115-339-11	CERAMIC CHIP	0.1uF 10.00% 50V	CN303	1-779-295-11	CONNECTOR,FFC(LIF(NON-ZIF))27P	
C319	1-163-021-91	CERAMIC CHIP	0.01uF 10.00% 50V	< DIODE >			
C320	1-163-021-91	CERAMIC CHIP	0.01uF 10.00% 50V	D100	8-719-110-03	DIODE RD7.5ES-T2B2	
C321	1-163-021-91	CERAMIC CHIP	0.01uF 10.00% 50V	D101	8-719-119-29	DIODE RD39F-T7B2	
C322	1-163-021-91	CERAMIC CHIP	0.01uF 10.00% 50V	D102	8-719-046-10	DIODE EC11FS2-TE12L	
C323	1-163-021-91	CERAMIC CHIP	0.01uF 10.00% 50V	D103	8-719-046-10	DIODE EC11FS2-TE12L	
C324	1-115-339-11	CERAMIC CHIP	0.1uF 10.00% 50V	D104	8-719-046-10	DIODE EC11FS2-TE12L	
C325	1-104-665-11	ELECT	100uF 20.00% 10V	D105	8-719-046-10	DIODE EC11FS2-TE12L	
C327	1-163-021-91	CERAMIC CHIP	0.01uF 10.00% 50V	D106	8-719-046-10	DIODE EC11FS2-TE12L	
C328	1-163-021-91	CERAMIC CHIP	0.01uF 10.00% 50V	D107	8-719-046-10	DIODE EC11FS2-TE12L	
C329	1-115-339-11	CERAMIC CHIP	0.1uF 10.00% 50V	D108	8-719-210-39	DIODE EC10QS04-TE12L5	
C330	1-104-665-11	ELECT	100uF 20.00% 10V	D109	8-719-210-39	DIODE EC10QS04-TE12L5	
C331	1-104-665-11	ELECT	100uF 20.00% 10V	D110	8-719-046-10	DIODE EC11FS2-TE12L	
C332	1-115-339-11	CERAMIC CHIP	0.1uF 10.00% 50V	D113	8-719-801-78	DIODE 1SS184-TE85L	
C333	1-163-021-91	CERAMIC CHIP	0.01uF 10.00% 50V	D116	8-719-801-78	DIODE 1SS184-TE85L	
C334	1-163-021-91	CERAMIC CHIP	0.01uF 10.00% 50V	D118	8-719-801-78	DIODE 1SS184-TE85L	
C340	1-126-916-11	ELECT	1000uF 20.00% 6.3V	D119	8-719-801-78	DIODE 1SS184-TE85L	
C341	1-115-339-11	CERAMIC CHIP	0.1uF 10.00% 50V	D120	8-719-017-79	DIODE MA8033-TX	
C342	1-163-251-11	CERAMIC CHIP	100PF 5.00% 50V	D121	8-719-801-78	DIODE 1SS184-TE85L	
C344	1-163-251-11	CERAMIC CHIP	100PF 5.00% 50V	D122	8-719-801-78	DIODE 1SS184-TE85L	
C345	1-126-916-11	ELECT	1000uF 20.00% 6.3V	D123	8-719-801-78	DIODE 1SS184-TE85L	
C346	1-115-339-11	CERAMIC CHIP	0.1uF 10.00% 50V	D124	8-719-801-78	DIODE 1SS184-TE85L	
C348	1-126-916-11	ELECT	1000uF 20.00% 6.3V	D125	8-719-977-28	DIODE UDZSTE-1710B	
C349	1-115-339-11	CERAMIC CHIP	0.1uF 10.00% 50V	D126	8-719-801-78	DIODE 1SS184-TE85L	
C350	1-126-916-11	ELECT	1000uF 20.00% 6.3V	D127	8-719-801-78	DIODE 1SS184-TE85L	
C351	1-115-339-11	CERAMIC CHIP	0.1uF 10.00% 50V	D200	8-719-986-56	DIODE HZS24-3LTA	
C352	1-126-916-11	ELECT	1000uF 20.00% 6.3V	D201	8-719-986-56	DIODE HZS24-3LTA	
C354	1-115-339-11	CERAMIC CHIP	0.1uF 10.00% 50V				

Ref. No.	Part No.	Description	Remarks	Ref. No.	Part No.	Description	Remarks
D202	8-719-986-56	DIODE HZS24-3LTA		FB304	1-410-397-21	FERRITE BEAD INDUCTOR	
D203	8-719-986-56	DIODE HZS24-3LTA		FB305	1-410-397-21	FERRITE BEAD INDUCTOR	
D204	8-719-986-56	DIODE HZS24-3LTA		FB306	1-410-397-21	FERRITE BEAD INDUCTOR	
D205	8-719-986-56	DIODE HZS24-3LTA		FB900	1-410-397-21	FERRITE BEAD INDUCTOR	
D206	8-719-986-56	DIODE HZS24-3LTA		FB902	1-410-397-21	FERRITE BEAD INDUCTOR	
D207	8-719-986-56	DIODE HZS24-3LTA		FB905	1-410-397-21	FERRITE BEAD INDUCTOR	
D208	8-719-800-76	DIODE 1SS226-TE85L		FB907	1-410-397-21	FERRITE BEAD INDUCTOR	
D209	8-719-800-76	DIODE 1SS226-TE85L		FB908	1-410-397-21	FERRITE BEAD INDUCTOR	
D212	8-719-801-78	DIODE 1SS184-TE85L		FB909	1-410-397-21	FERRITE BEAD INDUCTOR	
D213	8-719-801-78	DIODE 1SS184-TE85L					
D214	8-719-210-39	DIODE EC10QS04-TE12L5				< IC >	
D215	8-719-210-39	DIODE EC10QS04-TE12L5		IC100	8-759-604-35	IC M5F78M05L	
D216	8-719-801-78	DIODE 1SS184-TE85L		IC101	8-759-708-08	IC NJM78L08A-T3	
D217	8-719-801-78	DIODE 1SS184-TE85L		IC102	8-759-700-67	IC NJM79L08A-T3	
D219	8-719-801-78	DIODE 1SS184-TE85L		IC103	8-759-525-48	IC LA5632	
D303	8-719-801-78	DIODE 1SS184-TE85L		IC104	8-759-822-09	IC LB1641 (-11, -12)	
D900	8-719-109-97	DIODE RD6.8ES-T2B2		IC104	8-759-913-06	IC BA6209 (-13)	
D901	8-719-109-97	DIODE RD6.8ES-T2B2		IC105	8-759-708-05	IC NJM78L05A-T1	
D902	8-719-109-97	DIODE RD6.8ES-T2B2		IC200	8-759-927-29	IC SN74HCU04ANS-E05	
D903	8-719-109-97	DIODE RD6.8ES-T2B2		IC210	8-759-700-94	IC NJM5532M (TE2) (UC, GC, CN)	
D904	8-719-017-79	DIODE MA8033-TX		IC210	8-759-711-82	IC NJM4580E (T1) (J, 1UC, 1GC, 1CN)	
D905	8-719-109-97	DIODE RD6.8ES-T2B2		IC211	8-759-708-05	IC NJM78L05A-T1	
D906	8-719-109-97	DIODE RD6.8ES-T2B2		IC212	8-759-603-04	IC M5238FP-T1 (UC, GC, CN)	
D907	8-719-109-97	DIODE RD6.8ES-T2B2		IC212	8-759-711-82	IC NJM4580E (T1) (J, 1UC, 1GC, 1CN)	
D908	8-719-986-56	DIODE HZS24-3LTA		IC213	8-759-711-82	IC NJM4580E (T1)	
		< TERMINAL BOARD >		IC214	8-759-579-68	IC AK4524-TP	
EP100	1-537-770-21	TERMINAL BOARD, GROUND		IC215	8-759-603-04	IC M5238FP-T1 (UC, GC, CN)	
EP101	1-537-770-21	TERMINAL BOARD, GROUND		IC215	8-759-711-82	IC NJM4580E (T1) (J, 1UC, 1GC, 1CN)	
		< IC LINK >		IC216	8-759-700-94	IC NJM5532M (TE2) (UC, GC, CN)	
△ F101	1-576-122-21	LINK, IC (10uH)		IC216	8-759-711-82	IC NJM4580E (T1) (J, 1UC, 1GC, 1CN)	
		< FERRITE BEAD >		IC300	6-800-658-01	IC uPD703033AYGF-M29-3BA	
FB100	1-410-397-21	FERRITE BEAD INDUCTOR		IC301	8-759-343-88	IC DS1302Z-TE2	
FB101	1-410-397-21	FERRITE BEAD INDUCTOR		IC302	8-759-699-68	IC PST592D-T	
FB102	1-410-397-21	FERRITE BEAD INDUCTOR		IC303	8-759-431-99	IC BR9020F-E2	
FB103	1-410-397-21	FERRITE BEAD INDUCTOR		IC310	8-759-698-95	IC M30805SGP (UC, GC, CN)	
FB105	1-410-397-21	FERRITE BEAD INDUCTOR		IC310	6-800-627-01	IC M30805MG-217GP (J, 1UC, 1GC, 1CN)	
FB106	1-410-397-21	FERRITE BEAD INDUCTOR		IC311	6-800-563-01	IC MT28F800B3WG-E12/1 (UC, GC, CN)	
FB107	1-410-397-21	FERRITE BEAD INDUCTOR		IC904	8-759-927-29	IC SN74HCU04ANS-E05	
FB108	1-410-397-21	FERRITE BEAD INDUCTOR				< JACK >	
FB109	1-410-397-21	FERRITE BEAD INDUCTOR		J201	1-784-429-11	JACK, PIN 4P (ANALOG(UNBALANCE))	
FB110	1-410-397-21	FERRITE BEAD INDUCTOR		J901	1-794-927-11	JACK, PIN 2P (DIGITAL COAXIAL)	
FB111	1-410-397-21	FERRITE BEAD INDUCTOR		J902	1-764-188-21	JACK (SMALL TYPE) (DIA. 3.5) (CTRL-S)	
FB115	1-410-397-21	FERRITE BEAD INDUCTOR				< JUMPER RESISTOR >	
FB200	1-410-397-21	FERRITE BEAD INDUCTOR		JW300	1-216-295-91	SHORT 0	
FB201	1-410-397-21	FERRITE BEAD INDUCTOR (EXCEPT J)		JW302	1-208-437-61	RES-CHIP 1K 2% 1/10W	(J, CN)
FB202	1-410-397-21	FERRITE BEAD INDUCTOR (EXCEPT J)		JW303	1-208-526-61	RES-CHIP 47K 2% 1/10W	
FB203	1-410-397-21	FERRITE BEAD INDUCTOR (EXCEPT J)		JW304	1-216-295-91	SHORT 0 (J)	
FB204	1-410-397-21	FERRITE BEAD INDUCTOR (EXCEPT J)		JW305	1-216-295-91	SHORT 0 (EXCEPT J)	
FB210	1-410-397-21	FERRITE BEAD INDUCTOR					
FB211	1-410-397-21	FERRITE BEAD INDUCTOR					
FB212	1-410-397-21	FERRITE BEAD INDUCTOR					
FB213	1-410-397-21	FERRITE BEAD INDUCTOR					
FB300	1-410-397-21	FERRITE BEAD INDUCTOR					
FB301	1-410-397-21	FERRITE BEAD INDUCTOR					
FB302	1-410-397-21	FERRITE BEAD INDUCTOR					
FB303	1-410-397-21	FERRITE BEAD INDUCTOR					

△ „ w ... | h x △ „ ` V w : c p h ... x |
 ¶ Q ; . b h t O A s ... p b {
 H l o f i x | c f w ... ; ' o < ^ M {

The components identified by mark △ or dotted line with mark △ are critical for safety. Replace only with part number specified.

Les composants identifiés par une marque △ sont critiques pour la sécurité. Ne les remplacer que par une pièce portant le numéro spécifié.

MAIN

Ref. No.	Part No.	Description	Remarks	Ref. No.	Part No.	Description	Remarks
JW307	1-216-295-91	SHORT	0	R231	1-208-425-61	RES-CHIP	330 2% 1/10W
JW311	1-216-295-91	SHORT	0 (UC, GC, CN)	R232	1-208-462-61	RES-CHIP	10K 2% 1/10W
< TRANSISTOR >				R233	1-208-462-61	RES-CHIP	10K 2% 1/10W
Q100	8-729-143-49	TRANSISTOR	2SD1312-LKU-TP	R234	1-208-462-61	RES-CHIP	10K 2% 1/10W
Q101	8-729-119-76	TRANSISTOR	2SA1115TP-EF	R235	1-208-462-61	RES-CHIP	10K 2% 1/10W
Q102	8-729-421-22	TRANSISTOR	UN2211-TX	R236	1-208-518-61	RES-CHIP	22K 2% 1/10W
Q103	8-729-424-08	TRANSISTOR	UN2111-TX	R237	1-208-518-61	RES-CHIP	22K 2% 1/10W
Q104	8-729-424-08	TRANSISTOR	UN2111-TX	R238	1-208-441-61	RES-CHIP	1.5K 2% 1/10W
Q105	8-729-421-22	TRANSISTOR	UN2211-TX	R239	1-208-441-61	RES-CHIP	1.5K 2% 1/10W
Q106	8-729-016-19	TRANSISTOR	2SC3757-TX	R240	1-216-647-11	METAL CHIP	680 0.5% 1/10W
Q107	8-729-424-08	TRANSISTOR	UN2111-TX	R241	1-208-462-61	RES-CHIP	10K 2% 1/10W
Q210	8-729-141-73	TRANSISTOR	2SD1938(F)-S(TX).SO	R242	1-208-437-61	RES-CHIP	1K 2% 1/10W
Q211	8-729-141-73	TRANSISTOR	2SD1938(F)-S(TX).SO	R243	1-208-425-61	RES-CHIP	330 2% 1/10W
Q212	8-729-421-19	TRANSISTOR	UN2213-TX	R244	1-216-699-11	METAL CHIP	100K 0.5% 1/10W
Q213	8-729-141-73	TRANSISTOR	2SD1938(F)-S(TX).SO	R247	1-216-699-11	METAL CHIP	100K 0.5% 1/10W
Q214	8-729-141-73	TRANSISTOR	2SD1938(F)-S(TX).SO	R248	1-216-699-11	METAL CHIP	100K 0.5% 1/10W
Q215	8-729-141-73	TRANSISTOR	2SD1938(F)-S(TX).SO	R249	1-208-365-61	RES-CHIP	100 2% 1/10W
Q216	8-729-141-73	TRANSISTOR	2SD1938(F)-S(TX).SO	R250	1-208-365-61	RES-CHIP	100 2% 1/10W
Q900	8-729-016-19	TRANSISTOR	2SC3757-TX	R251	1-208-522-61	RES-CHIP	33K 2% 1/10W
Q901	8-729-016-19	TRANSISTOR	2SC3757-TX	R252	1-208-810-11	RES-CHIP	15K 2% 1/10W
< RESISTOR >				R253	1-208-810-11	RES-CHIP	15K 2% 1/10W
R50	1-216-375-81	METAL OXIDE	3.3 5% 2W	R254	1-208-522-61	RES-CHIP	33K 2% 1/10W
R100	1-208-365-61	RES-CHIP	100 2% 1/10W	R255	1-208-526-61	RES-CHIP	47K 2% 1/10W
R101	1-208-437-61	RES-CHIP	1K 2% 1/10W	R256	1-208-526-61	RES-CHIP	47K 2% 1/10W
R102	1-208-437-61	RES-CHIP	1K 2% 1/10W	R257	1-208-462-61	RES-CHIP	10K 2% 1/10W
R103	1-208-800-11	RES-CHIP	5.6K 2% 1/10W	R262	1-208-365-61	RES-CHIP	100 2% 1/10W
R104	1-208-784-11	RES-CHIP	1.2K 2% 1/10W	R263	1-208-365-61	RES-CHIP	100 2% 1/10W
R105	1-208-425-61	RES-CHIP	330 2% 1/10W	R264	1-208-774-11	RES-CHIP	470 2% 1/10W
R106	1-208-462-61	RES-CHIP	10K 2% 1/10W	R265	1-208-774-11	RES-CHIP	470 2% 1/10W
R107	1-208-462-61	RES-CHIP	10K 2% 1/10W	R266	1-208-437-61	RES-CHIP	1K 2% 1/10W
R108	1-216-623-11	METAL CHIP	68 0.5% 1/10W	R267	1-216-295-91	SHORT	0
R109	1-208-462-61	RES-CHIP	10K 2% 1/10W	R268	1-208-558-61	RES-CHIP	1M 2% 1/10W
R110	1-208-462-61	RES-CHIP	10K 2% 1/10W	R269	1-208-558-61	RES-CHIP	1M 2% 1/10W
R111	1-216-659-11	METAL CHIP	2.2K 0.5% 1/10W	R270	1-208-437-61	RES-CHIP	1K 2% 1/10W
R115	1-208-518-61	RES-CHIP	22K 2% 1/10W	R271	1-208-437-61	RES-CHIP	1K 2% 1/10W
R116	1-208-462-61	RES-CHIP	10K 2% 1/10W	R272	1-216-671-11	METAL CHIP	6.8K 0.5% 1/10W
R117	1-208-518-61	RES-CHIP	22K 2% 1/10W	R273	1-208-526-61	RES-CHIP	47K 2% 1/10W
R118	1-208-462-61	RES-CHIP	10K 2% 1/10W	R274	1-208-437-61	RES-CHIP	1K 2% 1/10W
R200	1-216-295-91	SHORT	0	R275	1-216-671-11	METAL CHIP	6.8K 0.5% 1/10W
R201	1-216-665-11	METAL CHIP	3.9K 0.5% 1/10W	R276	1-208-526-61	RES-CHIP	47K 2% 1/10W
R202	1-208-365-61	RES-CHIP	100 2% 1/10W	R277	1-208-437-61	RES-CHIP	1K 2% 1/10W
(EXCEPT J)				R278	1-215-882-81	METAL OXIDE	22 5% 2W
R202	1-216-295-91	SHORT	0 (J)	R279	1-216-295-91	SHORT	0
R211	1-208-365-61	RES-CHIP	100 2% 1/10W	R280	1-216-295-91	SHORT	0
R212	1-208-365-61	RES-CHIP	100 2% 1/10W	R281	1-208-437-61	RES-CHIP	1K 2% 1/10W
R213	1-208-365-61	RES-CHIP	100 2% 1/10W	R282	1-216-699-11	METAL CHIP	100K 0.5% 1/10W
R220	1-208-462-61	RES-CHIP	10K 2% 1/10W	R283	1-216-619-11	METAL CHIP	47 0.5% 1/10W
R221	1-208-462-61	RES-CHIP	10K 2% 1/10W	R284	1-216-619-11	METAL CHIP	47 0.5% 1/10W
R222	1-208-462-61	RES-CHIP	10K 2% 1/10W	R285	1-216-295-91	SHORT	0
R223	1-208-462-61	RES-CHIP	10K 2% 1/10W	R286	1-216-295-91	SHORT	0
R224	1-208-518-61	RES-CHIP	22K 2% 1/10W	R287	1-208-462-61	RES-CHIP	10K 2% 1/10W
R225	1-208-518-61	RES-CHIP	22K 2% 1/10W	R288	1-208-462-61	RES-CHIP	10K 2% 1/10W
R226	1-208-441-61	RES-CHIP	1.5K 2% 1/10W	R289	1-216-699-11	METAL CHIP	100K 0.5% 1/10W
R227	1-208-441-61	RES-CHIP	1.5K 2% 1/10W	R290	1-216-699-11	METAL CHIP	100K 0.5% 1/10W
R228	1-216-647-11	METAL CHIP	680 0.5% 1/10W	R291	1-216-699-11	METAL CHIP	100K 0.5% 1/10W
R229	1-208-462-61	RES-CHIP	10K 2% 1/10W	R292	1-216-699-11	METAL CHIP	100K 0.5% 1/10W
R230	1-208-437-61	RES-CHIP	1K 2% 1/10W	R301	1-216-611-11	METAL CHIP	22 0.5% 1/10W
				R303	1-208-462-61	RES-CHIP	10K 2% 1/10W
				R304	1-208-462-61	RES-CHIP	10K 2% 1/10W
				R305	1-208-462-61	RES-CHIP	10K 2% 1/10W

Ref. No.	Part No.	Description			Remarks	Ref. No.	Part No.	Description			Remarks
R306	1-208-462-61	RES-CHIP	10K	2%	1/10W	R413	1-208-462-61	RES-CHIP	10K	2%	1/10W
R307	1-208-462-61	RES-CHIP	10K	2%	1/10W						(UC, GC, CN)
R308	1-208-462-61	RES-CHIP	10K	2%	1/10W	R414	1-208-462-61	RES-CHIP	10K	2%	1/10W
R309	1-208-462-61	RES-CHIP	10K	2%	1/10W						(UC, GC, CN)
R310	1-208-462-61	RES-CHIP	10K	2%	1/10W	R415	1-208-462-61	RES-CHIP	10K	2%	1/10W
											(UC, GC, CN)
R311	1-208-462-61	RES-CHIP	10K	2%	1/10W	R416	1-208-462-61	RES-CHIP	10K	2%	1/10W
R335	1-208-462-61	RES-CHIP	10K	2%	1/10W						(UC, GC, CN)
R336	1-208-462-61	RES-CHIP	10K	2%	1/10W	R417	1-208-462-61	RES-CHIP	10K	2%	1/10W
R340	1-216-295-91	SHORT	0								(UC, GC, CN)
R341	1-216-295-91	SHORT	0								
						R418	1-208-462-61	RES-CHIP	10K	2%	1/10W
R342	1-208-462-61	RES-CHIP	10K	2%	1/10W						(UC, GC, CN)
R343	1-216-295-91	SHORT	0			R419	1-208-462-61	RES-CHIP	10K	2%	1/10W
R344	1-208-462-61	RES-CHIP	10K	2%	1/10W						(UC, GC, CN)
R345	1-208-462-61	RES-CHIP	10K	2%	1/10W	R420	1-208-462-61	RES-CHIP	10K	2%	1/10W
R346	1-216-295-91	SHORT	0			R421	1-216-295-91	SHORT	0		(UC,GC,CN)
						R422	1-208-462-61	RES-CHIP	10K	2%	1/10W
R347	1-208-462-61	RES-CHIP	10K	2%	1/10W						
R348	1-208-462-61	RES-CHIP	10K	2%	1/10W	R426	1-216-295-91	SHORT	0		
					(UC, GC, CN)	R427	1-216-295-91	SHORT	0		
R350	1-208-462-61	RES-CHIP	10K	2%	1/10W	R433	1-216-295-91	SHORT	0		(J, 1UC, 1GC, 1CN)
					(UC, GC, CN)	R434	1-216-295-91	SHORT	0		(J, UC, GC, CN)
R354	1-208-462-61	RES-CHIP	10K	2%	1/10W	R435	1-208-462-61	RES-CHIP	10K	2%	1/10W
R355	1-208-462-61	RES-CHIP	10K	2%	1/10W						(1UC, 1GC, 1CN)
						R436	1-216-295-91	SHORT	0		
R356	1-208-462-61	RES-CHIP	10K	2%	1/10W	R437	1-216-295-91	SHORT	0		
					(UC, GC, CN)	R900	1-216-295-91	SHORT	0		
R357	1-208-462-61	RES-CHIP	10K	2%	1/10W	R901	1-208-365-61	RES-CHIP	100	2%	1/10W
R362	1-216-699-11	METAL CHIP	100K	0.5%	1/10W	R902	1-208-755-11	RES-CHIP	75	2%	1/10W
R364	1-216-699-11	METAL CHIP	100K	0.5%	1/10W						
R365	1-216-699-11	METAL CHIP	100K	0.5%	1/10W	R903	1-208-755-11	RES-CHIP	75	2%	1/10W
						R904	1-208-437-61	RES-CHIP	1K	2%	1/10W
R366	1-208-462-61	RES-CHIP	10K	2%	1/10W	R905	1-208-365-61	RES-CHIP	100	2%	1/10W
R369	1-208-462-61	RES-CHIP	10K	2%	1/10W	R906	1-208-437-61	RES-CHIP	1K	2%	1/10W
R370	1-208-462-61	RES-CHIP	10K	2%	1/10W	R907	1-208-526-61	RES-CHIP	47K	2%	1/10W
R373	1-216-699-11	METAL CHIP	100K	0.5%	1/10W						
R375	1-208-462-61	RES-CHIP	10K	2%	1/10W	R908	1-208-526-61	RES-CHIP	47K	2%	1/10W
						R909	1-208-462-61	RES-CHIP	10K	2%	1/10W
R377	1-208-462-61	RES-CHIP	10K	2%	1/10W	R910	1-208-365-61	RES-CHIP	100	2%	1/10W
					(J)	R911	1-208-462-61	RES-CHIP	10K	2%	1/10W
R378	1-208-462-61	RES-CHIP	10K	2%	1/10W	R912	1-208-365-61	RES-CHIP	100	2%	1/10W
R379	1-208-462-61	RES-CHIP	10K	2%	1/10W						
R380	1-208-462-61	RES-CHIP	10K	2%	1/10W	R913	1-216-699-11	METAL CHIP	100K	0.5%	1/10W
R381	1-208-462-61	RES-CHIP	10K	2%	1/10W	R914	1-208-526-61	RES-CHIP	47K	2%	1/10W
						R915	1-208-437-61	RES-CHIP	1K	2%	1/10W
R382	1-208-462-61	RES-CHIP	10K	2%	1/10W	R918	1-208-526-61	RES-CHIP	47K	2%	1/10W
R383	1-208-462-61	RES-CHIP	10K	2%	1/10W	R920	1-208-550-61	RES-CHIP	470K	2%	1/10W
R384	1-208-462-61	RES-CHIP	10K	2%	1/10W						
R396	1-208-462-61	RES-CHIP	10K	2%	1/10W						< VARIABLE RESISTOR >
R397	1-208-462-61	RES-CHIP	10K	2%	1/10W						
						RV200	1-227-246-11	RES, VAR, CARBON 20K			(ANALOG INPUT LEVEL)
R399	1-208-462-61	RES-CHIP	10K	2%	1/10W						
R404	1-208-462-61	RES-CHIP	10K	2%	1/10W						< RELAY >
					(UC, GC, CN)						
R405	1-208-462-61	RES-CHIP	10K	2%	1/10W						
					(UC, GC, CN)	RY200	1-755-060-11	RELAY			
R406	1-208-462-61	RES-CHIP	10K	2%	1/10W						< TRANSFORMER >
					(UC, GC, CN)						
R407	1-208-462-61	RES-CHIP	10K	2%	1/10W						
					(UC, GC, CN)	T901	1-416-701-11	COIL (WITH CORE)			
R408	1-208-462-61	RES-CHIP	10K	2%	1/10W						< THERMISTOR(POSITIVE) >
					(UC, GC, CN)						
R409	1-208-462-61	RES-CHIP	10K	2%	1/10W						
					(UC, GC, CN)	THP200	1-801-671-11	THERMISTOR, POSITIVE			
R410	1-208-462-61	RES-CHIP	10K	2%	1/10W	THP201	1-801-671-11	THERMISTOR, POSITIVE			
					(UC, GC, CN)						
R411	1-208-462-61	RES-CHIP	10K	2%	1/10W						
					(UC, GC, CN)						
R412	1-208-462-61	RES-CHIP	10K	2%	1/10W						
					(UC, GC, CN)						

MAIN

PSW

SIRCS

Ref. No.	Part No.	Description	Remarks
< VIBRATOR >			
X200	1-760-955-11	VIBRATOR, CRYSTAL (45.158MHz)	
X301	1-579-886-21	VIBRATOR, CRYSTAL (32MHz)	
X330	1-781-174-21	VIBRATOR, CERAMIC (10MHz)	
< VIBRATOR >			
XF300	1-760-014-11	VIBRATOR, CERAMIC (20MHz)	

*	A-4591-309-A	PSW BOARD, COMPLETE	

	1-533-233-11	HOLDER, FUSE	
< CAPACITOR >			
△ C901	1-117-703-11	CERAMIC 0.0047uF 99% 250V	
< CONNECTOR >			
CN901	1-564-321-00	PIN, CONNECTOR 2P	
< FUSE >			
△ F901	1-532-463-51	FUSE (T1AL/250V) (EXCEPT J, UC, 1UC)	
△ F901	1-576-100-11	FUSE (1A/250V) (J, UC, 1UC)	
< SWITCH >			
△ S901	1-572-267-21	SWITCH, PUSH (AC POWER)(1 KEY) (POWER)	

*	A-4591-311-A	SIRCS BOARD, COMPLETE (J)	
*	A-4591-359-A	SIRCS BOARD, COMPLETE (EXCEPT J)	

< CAPACITOR >			
C751	1-124-589-11	ELECT 47uF 20% 16V	
< CONNECTOR >			
* CN750	1-566-970-11	HOUSING, CONNECTOR(PC BOARD)8P	
< DIODE >			
D750	8-719-108-12	DIODE RD9.1EW-T2	
D751	8-719-108-12	DIODE RD9.1EW-T2	
D752	8-719-108-12	DIODE RD9.1EW-T2	
D753	8-719-108-12	DIODE RD9.1EW-T2	
< FERRITE BEAD >			
FB751	1-410-397-21	FERRITE BEAD INDUCTOR	
< FILTER >			
FL750	1-236-130-11	FILTER, LOW PASS (EXCEPT J)	
FL751	1-236-130-11	FILTER, LOW PASS (EXCEPT J)	
< IC >			
IC750	8-749-011-22	IC GP1U27X	
< JACK >			
J750	1-815-139-11	CONNECTOR, ROUND TYPE 6P (KEYBOARD)	

Ref. No.	Part No.	Description	Remarks
< RESISTOR >			
R750	1-247-807-31	CARBON 100 5% 1/4W	
R751	1-249-401-11	CARBON 47 5% 1/4W F	
R752	1-247-807-31	CARBON 100 5% 1/4W	
R753	1-247-807-31	CARBON 100 5% 1/4W	
R754	1-249-421-11	CARBON 2.2K 5% 1/4W F	
< SWITCH >			
S750	1-771-122-11	SWITCH, SLIDE (COAX/UNBAL/BAL)	

MISCELLANEOUS			

24	1-757-252-11	WIRE, FLAT TYPE (23 CORE)	
31	1-500-422-11	BEAD, FERRITE (UC, 1UC, 1GC)	
33	1-543-830-11	CLAMP, SLEEVE FERRITE (EXCEPT J)	
34	1-543-798-11	FILTER, CLAMP (FERRITE CORE)	(1UC, 1GC, 1CN)
59	1-757-254-12	WIRE, FLAT TYPE (27 CORE)	
60	1-757-253-12	WIRE, FLAT TYPE (23 CORE)	
△ 63	1-751-275-11	CORD, POWER (GC, 1GC)	
△ 63	1-783-531-41	CORD, POWER (UC)	
△ 63	1-790-345-21	CORD, POWER (J)	
△ 63	1-782-510-11	CORD, POWER (CN, 1CN)	
△ 63	1-792-149-12	CORD, POWER (1UC)	
△ PT1	1-435-758-11	TRANSFORMER, POWER (EXCEPT 1GC)	
△ PT1	1-435-758-21	TRANSFORMER, POWER (1GC)	

ACCESSORIES & PACKING MATERIALS			

△	1-476-335-11	REMOTE COMMANDER (RM-DR1J) (J)	
	1-476-336-11	REMOTE COMMANDER (RM-DR1E) (EXCEPT J)	
△	1-569-008-21	ADAPTOR, CONVERSION 2P (GC,1GC)	
	1-791-953-12	CORD, CONNECTION	
	2-347-245-03	MANUAL, INSTRUCTION (JAPANESE) (J)	
	2-347-245-12	MANUAL, INSTRUCTION (GC)	
*	2-347-245-21	MANUAL, INSTRUCTION (CHINESE) (CN)	
	2-347-245-31	MANUAL, INSTRUCTION (ENGLISH)	(UC,1UC,1GC)
	2-347-245-51	MANUAL, INSTRUCTION (CHINESE) (1CN)	

HARDWARE LIST			

#1	7-685-870-01	SCREW +BVTT 3X5 (S)	
#2	7-685-872-09	SCREW +BVTT 3X8 (S)	
#3	7-685-647-79	SCREW +BVTP 3X10 TYPE2 IT-3	
#4	7-682-546-04	SCREW +PTT 3X5 (S)	
#5	7-685-133-19	SCREW (DIA. 2.6) (IT3B)	
<div>△ „ w ... h x △ „ ` v w : ¢ p h ... x ℚ i , b h t o A s ... p b { H l o f i x c f w ... ; ` o < ^ M {</div>			
The components identified by mark △ or dotted line with mark △ are critical for safety. Replace only with part number specified.		Les composants identifiés par une marque △ sont critiques pour la sécurité. Ne les remplacer que par une pièce portant le numéro spécifié.	